

PBS v12.05 ODBC Installation

ODBC Catalog for AcuXDBC

Passport Business Solutions™

V 12.05

Passport Business Solutions
ODBC Catalog for AcuXDBC and AcuXDBC Server
Version 12.05
Updated 07/19/2018

If you have any comments about this guide, please send your feedback to:
psi@pass-port.com

Passport Software, Inc. (“Passport” or “PSI”) has taken reasonable preventive measures to ensure the accuracy of the information contained in this manual. However, Passport makes no warranties or representations with respect to the information contained herein; and Passport shall not be held liable for damages resulting from any errors or omissions herein or from the use of the information contained in this manual.

PROPRIETARY RIGHTS NOTICE: No part of this material may be reproduced or transmitted in any form or by any means, electronic, mechanical, or otherwise, including photocopying and recording or in connection with any information storage or retrieval system, without express written permission from Passport Software, Inc.

Copyright Passport Software, Inc. © 2018. All Rights Reserved. PBS, RealWorld, and EZ Convert are trademarks or registered trademarks of Passport Software, Inc. SQL Server Express 2008 R2, SQL Server Express 2012, Windows, Windows 7, Windows 8, Windows 10, Windows Server 2008 and Windows Server 2012 are registered trademarks of Microsoft Corporation in The United States and other countries. AcuCOBOL-GT and Acu4GL are registered trademarks of Micro Focus (IP) Limited. Additional names of companies or products may be the intellectual property of their respective owners.

Passport Software, Inc.
181 Waukegan Rd.
Suite 200
Northfield, IL 60093
Main: www.pass-port.com
Manufacturing: www.pbsmfg.com

License Agreement

1. License Grant

Passport Software, Inc. (Passport) hereby grants to Licensee and Licensee accepts a non-exclusive license for the enclosed Software with the rights, terms, and conditions as detailed in this License Agreement:

- a. You may install and use the Software on a single computer system or single computer file server for your own internal business purposes provided you (the Licensee) do not exceed the number of concurrent users licensed by Passport to access the Software. If Licensee wishes to increase the number of licensed concurrent users, Licensee must contact Licensee's Passport Partner (your Passport Software supplier) or Passport directly.
- b. You may make backup copies of the Software as required for your own internal business purposes provided that you reproduce all copyright notices and other proprietary notices on each copy made. Backup copies may be used at any time to re-install the enclosed Software in the event of loss, destruction, or other malfunction of the Software.
- c. You may only transfer the Software and this license to a successor to the whole of Licensee's business, provided the successor agrees to accept the terms and conditions of this agreement. If you transfer the Software, you must report to Passport the name of the new user of the Software, and you may not retain any copies of the Software yourself once you have transferred it. No other transfers of the Software are permitted without the prior written consent of Passport Software, Inc.

Licensee shall not export or re-export, directly or indirectly (including via remote access) the Software, Documentation or other information or materials provided by Passport hereunder, to any country for which the United States or any other relevant jurisdiction requires any export license or other governmental approval at the time of export without first obtaining such license or approval from Passport. It shall be Licensee's responsibility to comply with the latest United States export regulations, and Licensee shall defend and indemnify Passport from and against any damages, fines, penalties, assessments, liabilities, costs and expenses (including reasonable attorneys' fees and court costs) arising out of any claim that Software, Documentation, or other information or materials provided by Passport hereunder were exported or otherwise accessed, shipped or transported in violation of applicable laws and regulations. Licensee shall comply with all laws, legislation, rules, regulations, and governmental requirements with respect to the Software, and the performance by Licensee of its obligations hereunder, of any jurisdiction in or from which Licensee directly or indirectly causes the Software to be used or accessed. In the event that this Agreement is required to be registered with any governmental authority, Licensee shall

cause such registration to be made and shall bear any expense or tax payable in respect thereof.

This non-exclusive license is effective for the useful life of the Software. However, this license will immediately terminate if you fail to comply with any term or condition of this Agreement. Upon termination you must destroy all copies of the Software.

A new version of the Software replaces the version of the Software previously licensed. Use of a new Software version terminates the license to use that part of the Software replaced by the new Software version and Licensee shall destroy or return to Passport all copies of any prior Software version previously licensed.

EXCEPT AS STATED ABOVE, YOU MAY NOT COPY, TRANSFER, OR DISTRIBUTE THE SOFTWARE TO OTHERS, AND ANY UNAUTHORIZED COPYING, TRANSFER, OR DISTRIBUTION SHALL AUTOMATICALLY TERMINATE YOUR LICENSE.

2. Passport Update Program

Passport makes available its subscription update service (Passport Update Program - PUP) to licensees of the Software. Only licensees having current and up-to-date enrollment in PUP are permitted to install and use any Software updates. Contact your Passport Partner (your Passport Software supplier) or Passport directly to enroll in this program.

3. Passport's Proprietary Rights

The Software is copyrighted by Passport Software, Inc. and some portions of the Software are copyrighted by AcuCorp, Inc., a Micro Focus International PLC company. All rights reserved.

Passport and its third party licensors retain all proprietary and intellectual property rights in the Software and Documentation and in any trademarks affixed to the Software or the Documentation. Licensee shall not take any action inconsistent with such title and ownership. Licensee shall not alter or remove any printed or on-screen copyright, trade secret, proprietary or other legal notices contained on or in copies of any Software or Documentation. **LICENSEE ACKNOWLEDGES AND AGREES THAT THE SOFTWARE MAY CONTAIN CODE OR REQUIRE DEVICES THAT DETECT OR PREVENT UNAUTHORIZED USE OF THE SOFTWARE.** Licensee shall notify Passport immediately in the event of unauthorized possession or use of Software or Documentation.

Licensee is not permitted (a) to decompile, disassemble, reverse compile, reverse assemble, reverse translate or otherwise reverse engineer the Software, (b) to use any similar means to discover the source code of the Software or to discover the trade secrets in

the Software, or (c) to otherwise circumvent any technological measure that controls access to the Software.

Updates to the Software made available to Licensee through the Passport Update Programs shall be treated for all purposes as Software under this License and all intellectual property rights therein shall be retained by Passport.

4. Limited Warranty and Disclaimers

Passport warrants that the CD-ROM and/or other media on which the Software and User Documentation is recorded are readable by a compatible hardware system. For a period of 90 days (the Warranty Period) after the initial date of this license, if Licensee discovers any defects in the readability of the original CD-ROM and/or other media, Licensee may return it to Licensee's Passport Partner (your Passport Software supplier) or Passport for a free replacement, which is Licensee's sole and exclusive remedy in the event of such defect[s].

EXCEPT AS SPECIFICALLY PROVIDED HEREIN, THE SOFTWARE IS NOT ERROR-FREE AND IS BEING PROVIDED "AS IS" WITHOUT WARRANTY OF ANY KIND.

PASSPORT SOFTWARE, INC., ITS PROGRAM LANGUAGE SUPPLIERS AND OTHER VENDORS, HEREBY DISCLAIM ALL WARRANTIES, WHETHER EXPRESS OR IMPLIED, ORAL OR WRITTEN, WITH RESPECT TO THE SOFTWARE INCLUDING, WITHOUT LIMITATION, ALL IMPLIED WARRANTIES OF TITLE, NON-INFRINGEMENT, MERCHANTABILITY, FITNESS FOR ANY PARTICULAR PURPOSE, COURSE OF DEALING OR TRADE USAGE.

NO WARRANTY IS MADE REGARDING THE RESULTS OF ANY SOFTWARE OR SERVICES OR THAT ALL ERRORS IN THE SOFTWARE WILL BE CORRECTED, REGARDLESS OF THE FORM OR NATURE OF ANY CLAIM. SOME STATES DO NOT ALLOW THE EXCLUSION OR LIMITATION OF IMPLIED WARRANTIES, AND DO NOT ALLOW A LIMITATION ON HOW LONG ANY IMPLIED WARRANTY LASTS, SO THE ABOVE LIMITATIONS MAY NOT APPLY. NO PASSPORT EMPLOYEE, SUPPLIER, OR AGENT IS AUTHORIZED TO MAKE ANY MODIFICATIONS OR ADDITIONS TO THIS WARRANTY.

THE ENTIRE RISK AS TO THE QUALITY AND PERFORMANCE OF THE SOFTWARE IS WITH YOU. SHOULD THE SOFTWARE PROVE DEFECTIVE, YOU ASSUME THE ENTIRE COST OF ANY NECESSARY SERVICING, REPAIR OR CORRECTION, AND ANY INCIDENTAL OR CONSEQUENTIAL DAMAGES.

IN NO EVENT WILL PASSPORT, ITS PROGRAMMING LANGUAGE SUPPLIERS AND OTHER VENDORS, DISTRIBUTORS, OR DEALERS (PASSPORT PARTNERS) BE LIABLE FOR ANY DAMAGES, INCLUDING LOSS OF DATA, LOSS OF PROFITS, OR DIRECT, OR INDIRECT, INCIDENTAL, SPECIAL, OR CONSEQUENTIAL DAMAGES RESULTING FROM ANY DEFECT IN THE SOFTWARE, EVEN IF THEY HAVE BEEN ADVISED OF THE POSSIBILITY OF SUCH DAMAGE. SOME STATES DO NOT ALLOW THE EXCLUSION OR LIMITATION OF IMPLIED

WARRANTIES OR LIABILITY FOR INCIDENTAL OR CONSEQUENTIAL DAMAGES, SO THE ABOVE LIMITATIONS MAY NOT APPLY TO YOU.

THE FOREGOING RESTRICTIONS, DISCLAIMERS AND LIMITATIONS SHALL APPLY AND REMAIN IN FORCE EVEN IN THE EVENT OF A BREACH BY PASSPORT HEREUNDER OF A CONDITION OR FUNDAMENTAL TERM HEREUNDER, OR IN THE EVENT OF A BREACH WHICH CONSTITUTES A FUNDAMENTAL BREACH.

5. General Terms and Conditions

Nothing contained in this Agreement shall be deemed to constitute either party as the agent or representative of the other party, or both parties as joint venturers or partners for any purpose. Licensee's supplier of the Software (referred to herein as a "Passport Partner") is an independent contractor in relation to Passport and is not an employee, agent or partner of Passport.

This License Agreement is governed by the laws of the State of Illinois and jurisdiction for any claim or controversy raised by Licensee against Passport Software, Inc. shall only be in the Circuit Court of Cook County, State of Illinois.

If either party commences any action or proceeding against the other party to enforce or interpret this License, the prevailing party in such action or proceeding shall be entitled to recover from the other party the actual costs, expenses and attorneys' fees (including all related costs and expenses), incurred by such prevailing party in connection with such action or proceeding and in connection with obtaining and enforcing any judgment or order thereby obtained.

This License and the rights and obligations hereunder, may not be assigned, in whole or in part by Licensee, except to a successor to the whole of Licensee's business, without the prior written consent of Passport. In the case of any permitted assignment or transfer of or under this License, this License and all of its terms and conditions shall be binding upon, and inure to the benefit of, the successors, executors, heirs, representatives, administrators and assigns of the parties hereto.

This is the complete and exclusive statement of the License between you and Passport, and this License supersedes any prior agreements or understanding, oral or written, with respect to the subject matter of this License.

If you have any questions regarding this License, you may contact Passport at 847-729-7900 or email to psi@pass-port.com.

Table of Contents

1. Introduction	2
Product Description	2
AcuXDBC.....	2
<i>PBS™ ODBC Catalog for AcuXDBC™ and Multi-Company Configuration</i>	2
<i>Passport Query Builder</i>	2
<i>Changes to the ODBC Catalog</i>	3
AcuXDBC Requirements.....	3
Upgrading from an Earlier Version of PBS	3
3. AcuXDBC and PBS™ ODBC Catalog Installations	7
Installing AcuXDBC.....	7
Uninstalling AcuXDBC	16
Installing the PBS™ ODBC Catalog for AcuXDBC™ in Windows	16
4. AcuXDBC Product Configuration	18
AcuXDBC Configuration File.....	18
<i>Installation of the AcuXDBC Configuration File</i>	18
<i>Modifying the Configuration File Paths and Settings – Multi-Company</i>	19
Data Source Name Configuration Example.....	21
<i>Accessing the ODBC Data Source Administrator</i>	21
<i>Add and Configure the Data Source Name (DSN)</i>	22
ODBC-Enabled Application Installation and Configuration.....	25
Test the AcuXDBC Client Installation	26
<i>Testing XDBC from the Client</i>	26
<i>Connection Failed Error Message – SQL State 28000</i>	26
<i>Where to go from here?</i>	28
Appendix	29
1. <i>Concepts and Terms</i>	29
2. <i>Data Security and Limiting Access to PBS Data</i>	32
3. <i>Support and Contact Information</i>	33
4. <i>ODBC Performance</i>	34
5. <i>SQL Support</i>	35
6. <i>Hardware Issues</i>	35
7. <i>For programmers: Adding Files to an XDBC System Catalog</i>	35
8. <i>Modifying the XDBC Queries in Excel</i>	38
9. <i>Supported Modules and Files</i>	44

1. Introduction

The Micro Focus *extend*® 9/10 AcuXDBC® Data Interface for Windows® along with the PBS ODBC Catalog for AcuXDBC provides you with direct access to Passport Business Solutions information stored in vision data files. The *AcuXDBC Data Interface for Windows* presents your Passport Business Solutions accounting information to you for use with ODBC-enabled applications using the Microsoft's Open DataBase Connectivity standard.

Product Description

The single user version of the XDBC product for Passport Business Solutions consists of two components; the Acucorp extend 9/10 AcuXDBC Data Interface for Windows and the PBS ODBC Catalog files. [Chapter 3](#) and [Chapter 4](#) cover the steps of the installation and configuration.

NOTE: Each of these products is installed separately.
--

AcuXDBC

The Micro Focus *extend 9/10 AcuXDBC Data Interface for Windows* is the conduit between your Passport Business Solutions data and ODBC-enabled applications such as Microsoft Office applications. AcuXDBC gives ODBC-enabled applications access to your Passport Business Solutions data files. The AcuXDBC driver is used to create the data source that you will use in real-time to access your Passport Business Solutions data.

Earlier versions of AcuXDBC may function properly with PBS. Only versions 9 and 10 are mentioned in this document. The AcuXDBC version does not have to match the PBS runtime version.

PBS™ ODBC Catalog for AcuXDBC™ and Multi-Company Configuration

Passport Software, Inc. has created a PBS ODBC Catalog that is used in conjunction with AcuXDBC to provide access to your Passport Business Solutions data. This PBS ODBC Catalog is specific to the format of your Passport Business Solutions data files and it allows AcuXDBC to properly organize the data within these files for ODBC-enabled applications.

The same ODBC Catalog is used for each company in PBS; however a separate configuration is required for each company.

Passport Query Builder

If you are licensed for Passport Query Builder and you have a PBS Vision system, AcuXDBC is required to be installed on each workstation where the user wants to build or run a query.

Changes to the ODBC Catalog

If you had XDBC previously, there are major changes to the ODBC Catalog that will cause you to remake your queries after upgrading. See [Queries in Previous Versions of PBS](#).

Also see [Changed or New Files from v12.02 to 12.05](#).

AcuXDBC Requirements

XDBC version 8.1.x will run on most systems, even with PBS 12.05. If you already have this version then you may use it. You may also install XDBC version 9.1.x, 9.2.x or 10.1.x.

In order to interface your Passport Business Solutions data with a Windows application through AcuXDBC, you must be able to provide the following environment for *extend AcuXDBC Data Interface for Windows*.

- Microsoft Vista, Windows 7, Windows 8 or Windows 10 for the single user or client installation.
- Office may have an option of installing 32-bit or 64-bit. If you already have 32-bit version of XDBC, you may install the 32-bit version of Office to retain compatibility.

If you choose the 64-bit version of Office you must use a 64-bit version of XDBC.

Upgrading from an Earlier Version of PBS

Older versions of AcuXDBC work with PBS as long as the Office bit version matches. See bullet point above about 32-bit and 64-bit versions of Office and XDBC.

For Windows Paths

There are two options: One, if you maintain the same path and two, if you do not:

1. An option is to retain the path. Here is an example: If the path to your live version is *C:/PBS*, rename it to *C:/PBS.old* (or whatever is appropriate). Then install V12 into the *C:/PBS* path.

The final step is to install the v12.05 System Catalog into the PBS 12.05 system. The configuration file will *not* have to be modified.

2. You may use a different path for v12, but then you must update the configuration file(s) with the new path. The standard location for the configuration file(s) is *C:\Micro Focus\extend 10.0.1\AcuGT\AcuGT*. For information on altering the configuration file refer to the section called [Modifying the Configuration File Paths and Settings – Multi-Company](#) later in this document.

If you are upgrading to 9.1 AcuXDBC and you have AcuXDBC 8.1 installed on each workstation:

1. Uninstall the AcuXDBC 8.1 client driver.
2. Install the new 9.1 client driver. There are 32-bit and 64-bit versions available. Again, it must match the version of Office.
3. Configure the DSN for the AcuConnect 9.1 driver.

Windows Single User Install

This is done for a Windows system only. You may use your existing Extend 8.x AcuXDBC. It runs fine on Windows Vista, Windows 7, Windows 8 and may work on Windows 10 as well.

1. Install PBS v12.05 including updates and hot fixes.
2. Run EZ convert to convert the data. Install the updates and hot fixes for PBS.
3. Install the latest system catalogs for the current version.
4. Setup the configuration file to point to the new system.

Queries in Previous Version of PBS

There are two system catalogs for PBS v12.05:

1. One catalog works like v12.04 and earlier. The field and file names are the same as previous versions. This is called the Classic system catalog.
2. The second newer catalog type has the same field and file names as PBS SQL. This provides continuity between the PBS Vision and PBS SQL versions. When you move from PBS vision to PBS SQL only a few changes are needed to get your existing Queries to run. It is recommended that you use this system catalog.

To make SQL and XDBC file and field names identical, they were changed in the V12.05 XDBC to match the V12.05 SQL names. An example of a changed ODBC Table name:

12.04 – AP_VENFIL

12.05 - VENFIL

Most of the field names were changed as well.

You will have to modify or create new queries from any earlier version of PBS, to make them work in v12.05.

Changed or New Files from v12.02 to 12.05

The following is a list of changed or new files as it relates to XDBC:

Module	File description	ODBC Table	12.02 to 12.03	12.03 to 12.04	12.04 to 12.05
A/P	Control information	APCTLF	No	No	Yes
A/P	A/P Distributions	APDIST	Yes	No	Yes
A/P	Changed vendors	CNGVEN	No	No	Yes
A/P	Purchasing addresses *	PURADR	No	No	Replaced
A/P	Vendor contacts *	PCOFIL	No	No	Replaced
A/P	Pay-to addresses	PAYTOF	No	No	Yes

A/P	Transaction memos	TRXMEM	No	No	Yes
A/P	Vendors	VENFIL	No	No	Yes
A/P	Vendor History	VENHIS	Yes	No	Yes
A/R	A/R codes	ARCODS	No	No	Yes
A/R	A/R Distributions	ARDIST	Yes	No	No
A/R	Control information	ARCTLF	No	No	Yes
A/R	Changed Customers	CNGCUS	No	No	Yes
A/R	Customers	CUSFIL	No	No	Yes
A/R	Invoice history	IHSHDR	No	No	Yes
A/R	Recurring Headers	RHDRFI	No	Yes	No
C/O	Control information	COCTLF	No	Yes	Yes
C/R	Control Information	CKCTLF	Yes	Yes	No
C/R	C/R Distributions	CRDIST	Yes	No	No
C/R	Checkbook Transactions	CHKTRX	Yes	No	Yes
G/L	G/L Codes	GLCODS	No	No	Yes
G/L	Distribution Transactions	GNJTRX	Yes	No	Yes
G/L	General Journal Header	MLTRXD	No	No	Yes
G/L	General Journal Transactions	MLTRXH	No	No	Yes
G/L	G/L Transactions	TRXFIL	Yes	No	Yes
I/C	I/C Distributions	ICDIST	Yes	No	No
I/C	Serial Numbers	ICTRKF	Yes	No	No
I/C	Serial Number History	SERHIS	Yes	No	No
I/C	I/C Inventory History	ITXHIS	Yes	No	No
I/M	I/M Inventory History	INVHIS	No	Yes	Yes
I/M	Freeze Inventory	PHYFRZ	New for 12.03	No	No
I/M	Lot/Serial History	LSNHIS	No	No	Yes
I/M	Freeze On-hand Inventory	OHIFRZ	New for 12.03	No	No
I/M	Inventory Transaction History	INVHIS	No	Yes	No
I/M	Master Items	ITMMST	No	Yes	No
I/M	On Hand Inventory Details	OHIDET	No	No	Yes
I/M	Shop Orders	SOFIL	No	Yes	No
J/C	J/C Distributions	JCDIST	Yes	No	No
J/C	Job Details	DTLFIL	No	No	Yes
J/C	Inactive Job Details	DTLFIK	No	No	Yes
J/C	Holding File	HLDFIL	No	No	Yes
M/J	Estimates/Quotes lines	ESTLIN	No	Yes	No
M/J	Shop Order Labor Open	SOLAB	No	Yes	No
M/J	Shop Order Misc. Cost	SOMSC	No	Yes	No
M/J	Shop Order Purchas/Cost	SOPMCD	No	No	Yes
O/E	Control Information	OECTLF	Yes	No	No
O/E	Order Header	ORDHDR	No	No	Yes

P/D	Standard Operations	STDOPN	No	Yes	No
P/O	Changed Transaction Header	CNGHDR	No	No	Yes
P/O	P/O Transaction Header	HDRTRX	No	No	Yes
P/O	P/O Master Header	POHDRF	No	No	Yes
P/O	Price Adjustments	PRCADJ	No	No	Yes
P/O	Receivings History	RCVHIS	No	No	Yes
P/O	Receivings Transactions	RCVTRX	No	No	Yes
P/P	Blanket P.O. Header	BPOHDR	No	No	Yes
P/P	P.O. Change Log	POCNGL	No	Yes	No
P/P	P.O. Header	PPHDRF	No	No	Yes
P/P	Purchase Order Lines	POLINF	No	Yes	No
P/P	Price variances	PPVDET	No	Yes	No
PR	Changed Employees Log	CNGEMP	No	Yes	Yes
PR	Deductions/Earnings	DEDCOD	No	Yes	Yes
PR	Employees	EMPFIL	No	Yes	Yes
PR	Employee History	KSHIFL	No	Yes	Yes
PR	Adjustment Distributions	MANDIS	No	Yes	No
PR	Adjustment Transaction History	MANHIS	No	Yes	Yes
PR	Adjustment Transactions	MANTRX	No	Yes	Yes
PR	Jurisdictions	MJRFIL	Yes	No	Yes
PR	Payroll Control Information	PRCTLF	No	Yes	Yes
PR	Payroll Distributions	PRDIST	Yes	No	No
PR	Quarter-to-date History	QTDHIS	No	Yes	Yes
PR	State/City History	SCDHIS	No	No	Yes
PR	Tax Codes	TAXCOD	No	No	Yes
PR	Time Distributions	TIMDIS	No	Yes	No
PR	Time Transaction History	TIMHIS	No	Yes	Yes
PR	Time Transactions	TIMTRX	No	Yes	Yes
PR	Void Check Transactions	VDMTRX	Yes	Yes	Yes
PR	Void Checks	VDPCHK	No	Yes	No
PS	Registers	REGIFI	No	No	Yes
SY	Navigator Distributions	NADIST	Yes	No	No
SY	Credit Card Tokens	CCTKNF	N/A	New for 12.04	Yes
SY	Multiple contacts *	CNTCTF	No	No	Removed New for 12.05
SY	Contacts *	CONTAC	N/A	N/A	12.05
SY	Locations *	LOCATF	N/A	N/A	New for 12.05

* The Vendor Contacts file is replaced by the System Contacts. The A/P Purchasing Addresses file is replaced by the System Locations file. The Multiple contacts file was never used in previous versions and has been removed for v12.05.

3. AcuXDBC and PBS™ ODBC Catalog Installations

Installing AcuXDBC

The following installation instructions apply to AcuXDBC Windows single user or client.

A single-user system means that AcuXDBC is installed and configured for one computer. A client install means the PBS data is accessed over a network through AcuXDBC Server.

The *Micro focus extend AcuXDBC* product is the driver program for AcuXDBC access to Passport Business Solutions Vision data files. AcuXDBC acts as a gateway to your Passport Business Solutions data using Microsoft's Open Database Connectivity (ODBC) standard.

You will need a *Product Code* and *Product Key* in order to install AcuXDBC. This will be on a document titled *AcuXDBC v9.x.x License Key Summary* or something similar. You may use that version product code and key as long as you have the matching install version. The product code and key is usually provided as a PDF file which may be downloaded from Passport's [FMS](#) site. The file is named something like: *Partner Name – Company Name - AcuXDBC v9.x.x 2 user*.

In order to finish the configuration you must have a mapped drive to the PBS installation.

Install as Administrator

0. Whether this is a Windows 7, Windows 8 or Windows 10 operating system, **install AcuXDBC as an administrator!** Right click on the install and select install as administrator. If you do not, XDBC may not run with Microsoft Office Products.

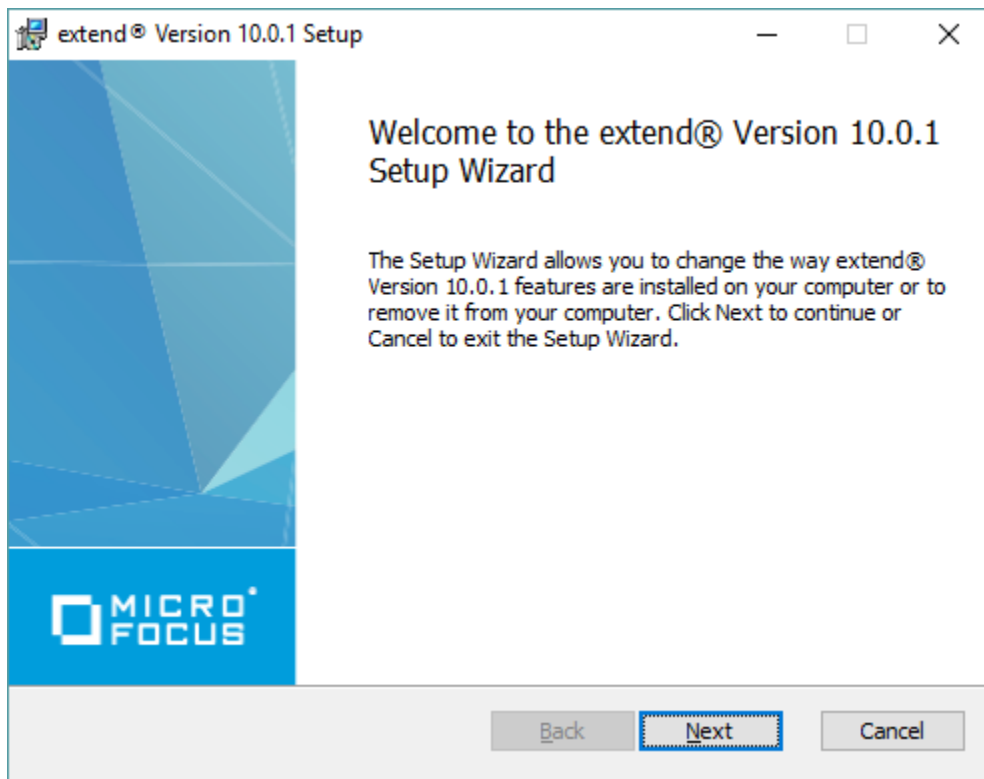
AcuXDBC Install Steps

1. Put the 1001win32.zip, 10.0.1win64.zip, 925win32.zip, 925win64.zip, Extend9.1.2_win64bit.zip or Extend9.1.21win32bit.zip file into a temporary folder on the C drive. Basically, if you have a 32-bit version of *Office*, install the 32-bit version of XDBC. If you have the 64-bit office version, install the 64-bit version of XDBC. For more information see [32-bit vs. 64-bit](#).

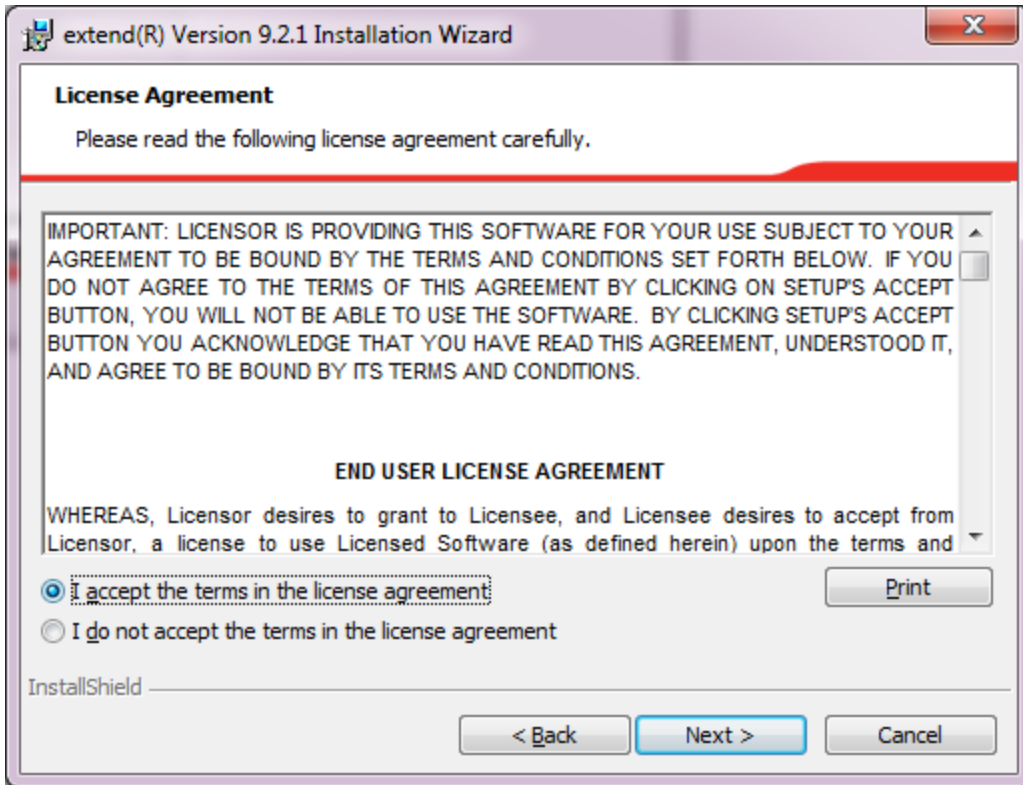
Extract the file. From the Disk1 or MSI folder, right click on *setup.exe* and select *Run as administrator*.

If version 10.0.1, right click on *extend(r) Version 10.0.1 x86.exe* and Run as administrator. For a 64 bit version of office, the install names should be slightly different. For example: *extend(R) Version 10.0.1 x64.exe*.

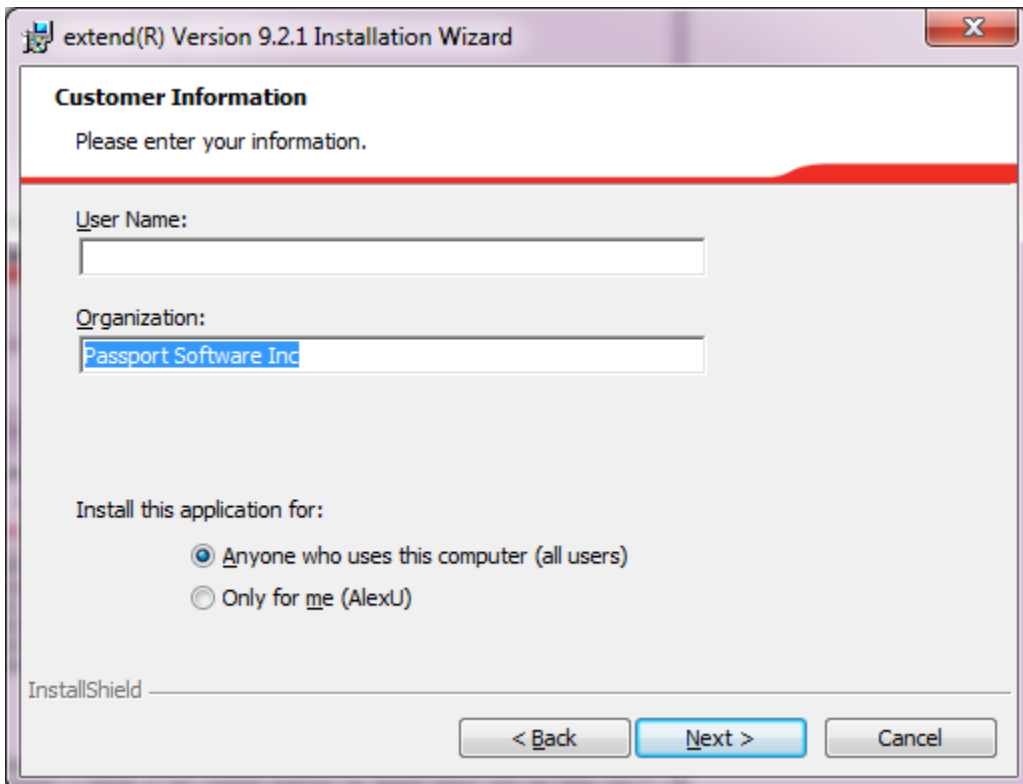
After running it a window similar to the following displays. The following Windows show the either the 10.0.1 or 9.2.1 version. These versions are similar. The screens indicate the actual version you are installing:



Select *Next* and this window displays:



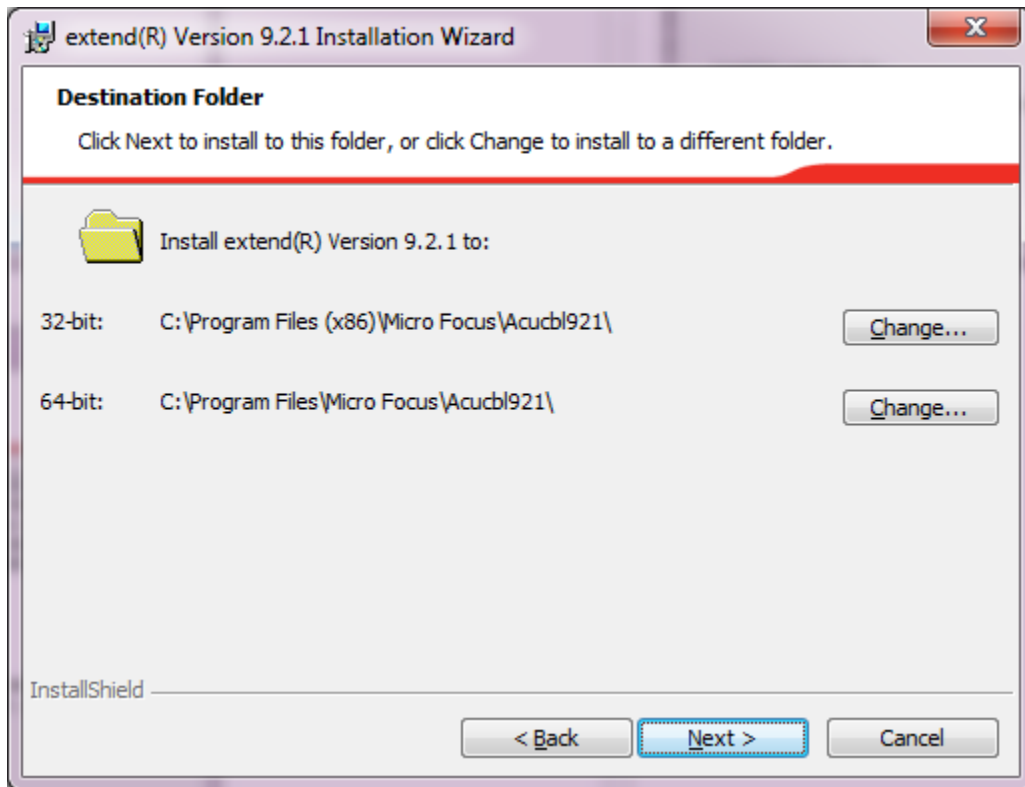
Select Next and this screen displays:



Select *Next*.

Select the path.

Read the Path Note below before you proceed.

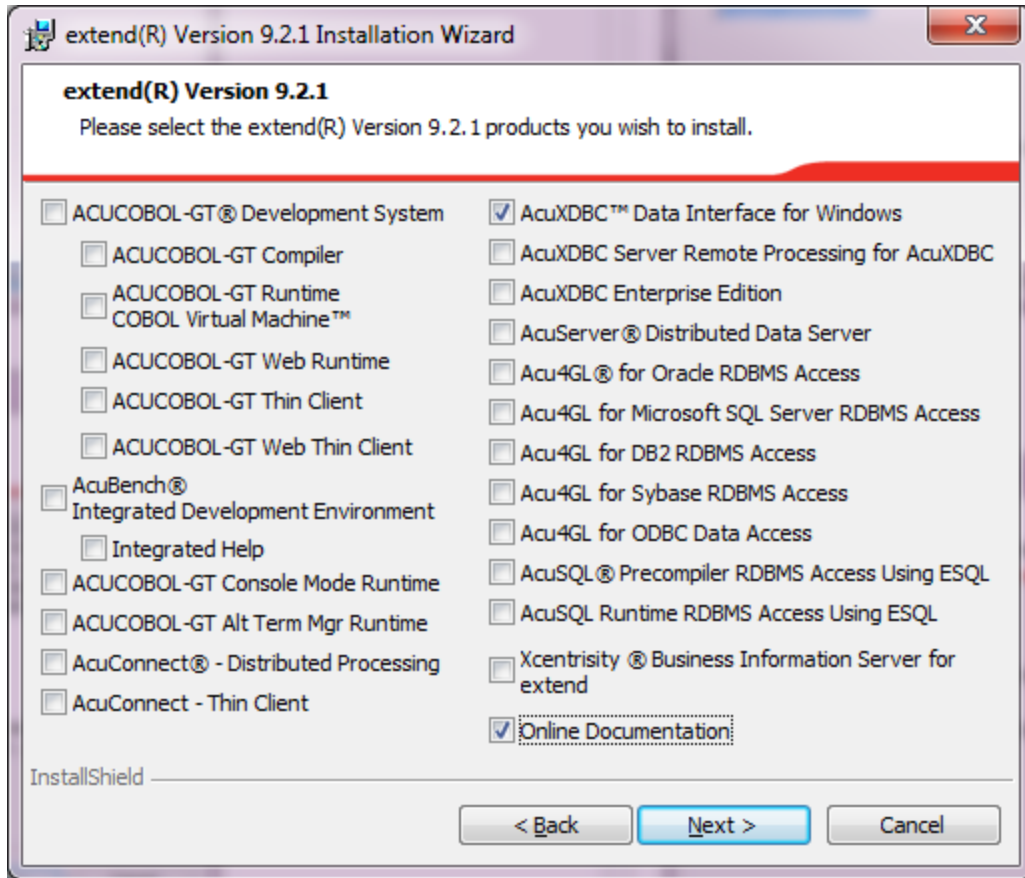


Path Note: If you use the default path which has *Program files* or if 32 bit *Program Files (x86)*, you will not be able to edit the configuration file in that path. Use a path like this:

C:\Micro Focus\extend 10.0.1\AcuGT

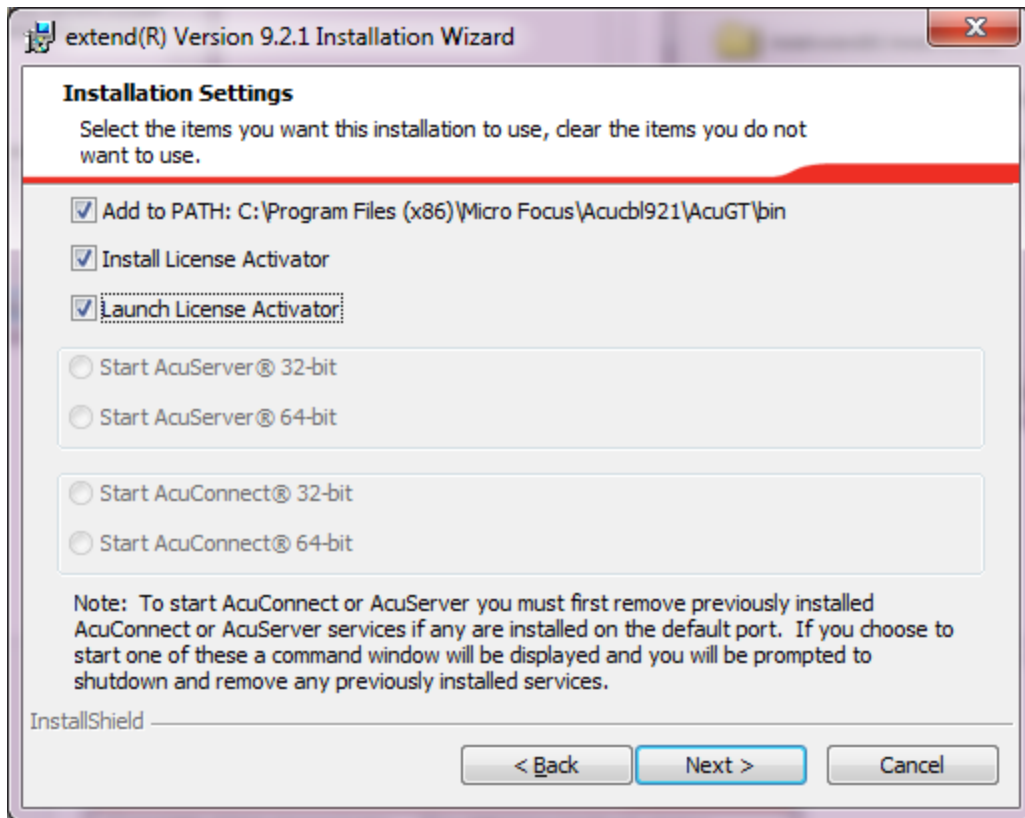
If you install XDBC in a path that is in Program Files you will have to edit the XDBC configuration file in a non-Program Files folder on the C drive and copy it to the C:\Program Files\Micro Focus\Acucblxxx\AcuGT folder when done.

Select *Next*.



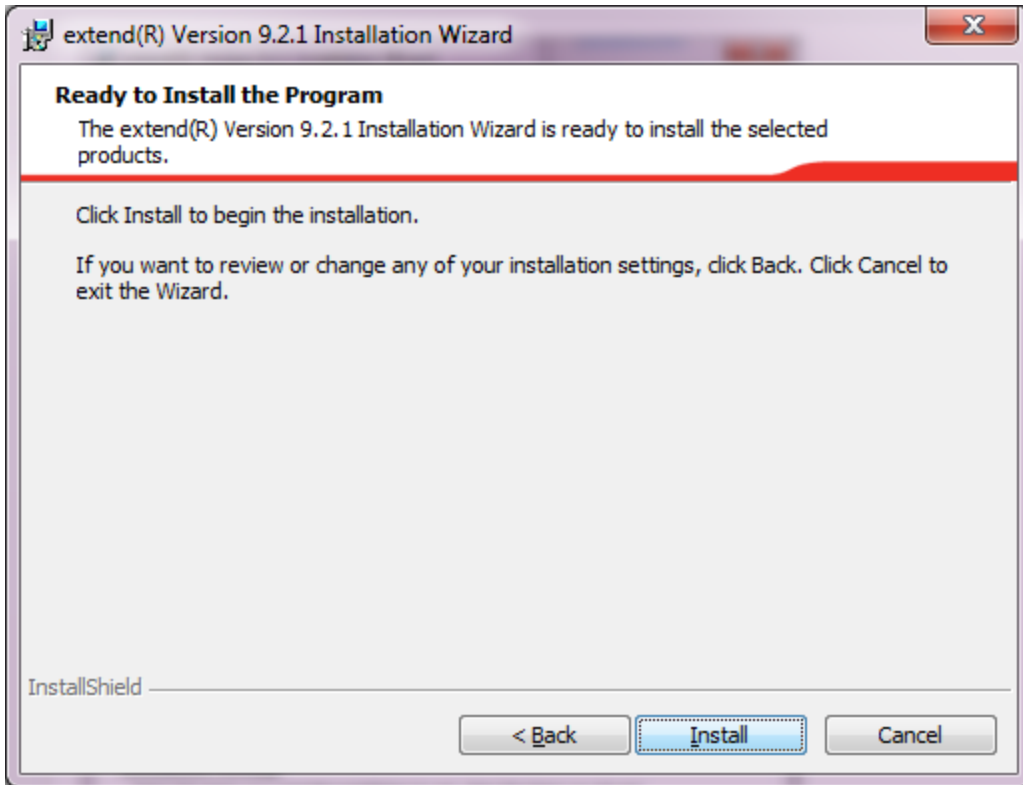
Select *AcuXDBC Data Interface for Windows* and Select *Next*. You may select the *Online Documentation* if you like. However this is technical documentation for all the Acu extend products. It does contain some technical information specifically for AcuXDBC.

The next screen displays:



Make sure the above are checked and select *Next*.

This screen displays:



Select *Install*. When the install is finished the *Activator Wizard* displays.



You were instructed above to run the activator during the XDBC install. However, if you did not, run Activator.exe in the bin folder and you can start it there.

Entering the Product Code and Key

2. Enter the **Product Code** and hit the Tab key. Enter the **Product Key** and hit the Enter key. Double check each as you enter them to verify that they are entered properly. Select Finish and it creates the *xvision.alc* XDBC license file. For version 10 there is also a second license file called *gds10.alc*.

This license may have been generated in C:\ProgramData\Micro Focus\extend\9.2.x\x86 or x64 folder.

If it is version 10 of AcuXDBC it will be in a folder name of:

This license may have been generated in C:\ProgramData\Micro Focus\extend\10.0.1\x86 or x64 folder.

You must copy the license(s) to the bin folder for AcuXDBC is installed.

ProgramData may be considered a hidden folder on your workstation. When it is, using Windows explore, you must allow to View hidden items. Then you may copy the *xvision.alc* file and *gds10.alc* file to the bin folder. Depending on the path you selected, the bin folder is normally in one of the following locations:

C:\Micro Focus\Acucbl92x\AcuGT\bin

C:\Micro Focus\Acucbl10.0.x\AcuGT\bin

Installation Verification

3. To verify that the AcuXDBC is installed, on your computer workstation, select **Start > Control panel**. On Windows 8.1 or Windows 10 right click on the start icon and select Control Panel.

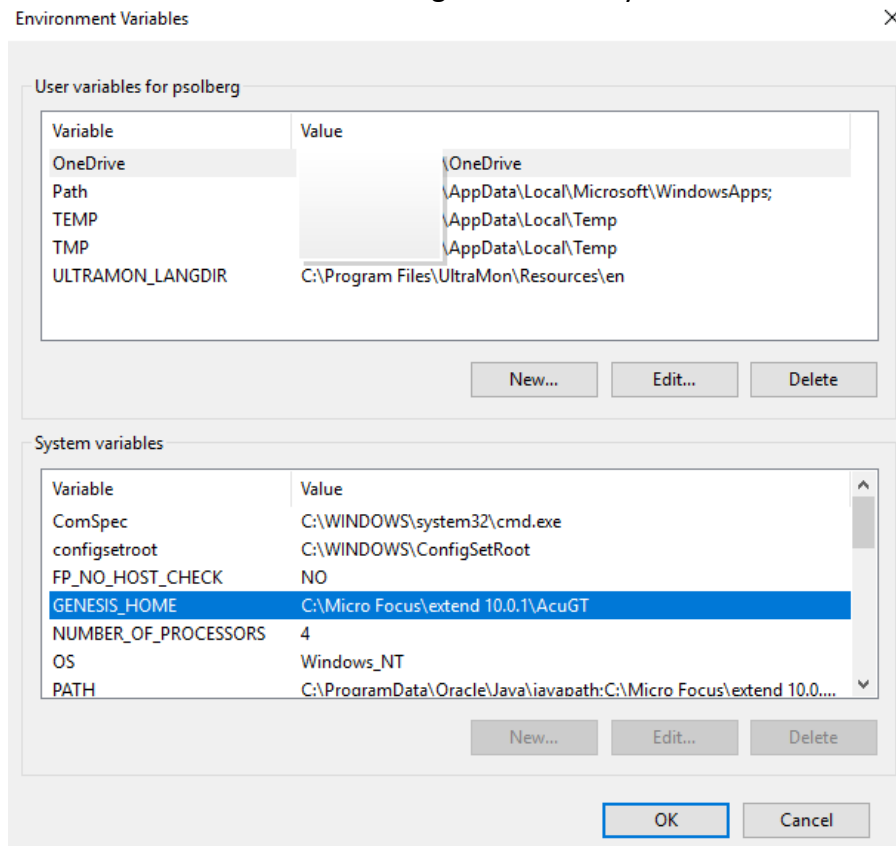
Select *Administrative Tools* and then *Data sources (ODBC)*. Using the *Small icons* setup, in Windows 8 or Windows 10 select *ODBC Data Sources (32-bit)* or *ODBC Data Sources (64-bit)*. Select the *Drivers* tab.

If AcuXDBC version 9, the extend9 AcuXDBC driver version 9.0x.0x.xxx should be installed.

If AcuXDBC version 10, the *extend 10.0.1* AcuXDBC driver version should be installed.

Enter the Environmental Variables

- Make this Environmental Variable entries. Go to System, select *Advanced system settings* and select the *Advanced* tab. Select the *Environmental variables* button is near the bottom of the window. Using Windows 10 you will see a window similar to this:



If the variable is not put there the installation, enter a new system variable like the following:

GENESIS_HOME

Enter a new System variable:

Variable name: GENESIS_HOME

Variable value: The value depends on the Extend XDBC version installed and path used.

Here is an example:

C:\ Micro Focus\Acucbl10.0.1\AcuGT

PATH

The path must contain the BIN folder, i.e.:

C:\ Micro Focus\Acucbl10.0.1\AcuGT\bin

Note: We have encountered a situation where there is a long list of environmental variables on the PC with the AcuXDBC GENESIS_HOME variable at the end. This can cause an error when trying to connect to AcuXDBC from Excel or other product. Delete this

variable and re-enter it so that the GENESIS_HOME is first on the list of variables. Also, delete any variable for an older, no longer used, version of AcuXDBC.

AcuXDBC 32-bit vs. 64-bit

- If you have a 32-bit operating system, install the 32-bit version of XDBC.
- If you have a 64-bit operating system, but a 32-bit version of Office, install the 32-bit version of XDBC.
- If you have a 64-bit operating system and a 64-bit version of Office, install the 64-bit version of XDBC.

When 32 bit programs are installed on a 64-bit Windows operating system they go to a special (32-bit) version of the Program Files folder called “Program Files (x86)”. The normal controls available from the operating system in this case are 64-bit oriented and so, for instance, the normal Control Panel > Administrative Tools > Data Sources (ODBC) functionality may *not* show the XDBC drivers after it has been correctly installed since they are not a 64-bit application.

To configure your XDBC data sources you may have to use the ODBC Data Source Administrator provided by Micro Focus. To start the program select:

Start > Programs > Extend 9.1.x > ODBC Data Source Administrator

For more information see configuration as documented in the [Data Source Name Configuration Example](#) section.

Uninstalling AcuXDBC

If you are uninstalling an older version of AcuXDBC in order to move to a more recent version, be sure to remove the DSN's from the ODBC Data Sources Administrative Tools first. If you do not, you must re-install the older version again, remove the DSN and then uninstall it again.

You may uninstall AcuXDBC from Programs and Features found in the Control Panel. Sort by date and look for extend(R) Version X.X.X. Select it and uninstall.

Installing the PBS™ ODBC Catalog for AcuXDBC™ in Windows

Working with the AcuXDBC driver, the PBS ODBC Catalog provides access to PBS data files. It is also required for the AcuXDBC Server installation on a Windows Server.

There are two Windows installations provided on the disk or can be downloaded from the FMS site. One is for only the PBS financial and distribution file access. The other is for the manufacturing and financial files.

The installation of the PBS ODBC Catalog for UNIX and Linux is covered in the [AcuXDBC for UNIX/Linux Server Installation and Configuration](#) section later in this document.

The ODBC Catalog must be installed in the "XDBC" directory (folder) under your PBS top-level directory (folder).

Do the following steps for the installation:

- 1) Provide drive letter access to where PBS is installed.
- 2) From the [FMS site](#) download the file that applies to your system. You must have a login and password to access to the Passport FMS.
- 3) There are two system catalog styles available.
 - a. There is a new system catalog that allows you to easily move from PBS vision to PBS system. This is now our standard and is recommended. It includes access to the accounting, distribution and manufacturing module data. To start the installation with this PBS catalog select:

PBS_ODBC_Cat_120500.exe

- b. If you prefer you may install the classic system catalog style. This will allow you to upgrade existing XDBC queries from older versions of PBS. Run this program for the accounting and distribution modules:

PBS_ODBC_Cat_120500_Classic.exe

For the manufacturing system catalog install use this:

Mfg_ODBC_Cat_120500_Classic.exe

For all of the above installs you will be prompted for a path. The standard and recommended location for PBS ODBC Catalog is in the top-level Passport Business Solutions directory. Install it there.

If the PBS™ ODBC Catalog files have been installed correctly, you will find it under the folder "/XDBC/SYSCAT" under your Passport Business Solutions top-level folder. For example, if your Passport Business Solutions software is installed on the C: drive in a folder named "PBS", your PBS™ ODBC Catalog files must be installed in C:/PBS/XDBC/SYSCAT.

4. AcuXDBC Product Configuration

After you have installed *extend AcuXDBC Data Interface for Windows* and the PBS™ ODBC Catalog you must configure the system. There are two parts to the configuration.

c. AcuXDBC Configuration File Path Entries

Enter the paths in the PBS AcuXDBC Configuration file as needed to access the PBS Company 00 data files.

- A. A separate Configuration file and DSN is required for each PBS company.
- B. Path entries are required to each module.

d. Data Source Name Configuration

Configure a Data Source Name (DSN) that will connect your PBS ODBC Catalog files with your actual Passport Business Solutions data files. This is done using the Windows ODBC Data Source Administrator. A separate DSN is needed for each PBS company.

You must install the PBS ODBC Catalog for AcuXDBC before you do these steps.

The following sections contain data and examples of the Data Source Name Configuration and the AcuXDBC Configuration File Path entries.

AcuXDBC Configuration File

There is a text file called **PBSxdbc00.cfg** that has a separate installation. This configuration file is setup for PBS, but still may require some editing in order for AcuXDBC to function properly.

Installation of the AcuXDBC Configuration File

There are two separate configuration file installations. One is for the financial/distribution modules and the other for the financial/manufacturing modules. Both can be downloaded from the FMS site.

Do the following steps for the installation:

- 1) You must be on the computer or drive letter access to where PBS is installed.
- 2) You may also download the install file from the FMS site. The file names are **pbs_XDBCcfg.exe** for all the file types.
- 3) To start the installation for the Financial and Distribution AcuXDBC Configuration file, using Windows Explorer, browse to the downloaded location and double click on the **pbs_XDBCcfg.exe**.

-
4. Configuration File Location Note: During the installation there is an option to change the directory. The default folder location is this:

C:\Micro Focus\extend 10.0.1\AcuGT

If it is not one of those, you must find the **AcuGT** folder on your system and install the configuration file there.

Important note: On a Windows 8 system you cannot modify the configuration file if it is installed under program files. You must copy it somewhere else on the C drive, modify it and copy it back.

Modifying the Configuration File Paths and Settings – Multi-Company

Use Notepad or your favorite text editor to open it. Do not use WordPad as this may rename the extension when you save the changes making the file unusable.

There are several steps of change regarding this file.

- "PBS ODBC CATALOG PATH " – Defining the path to the PBS ODBC Catalog
- "ALTERING PATHS TO FIND PBS FILES" – Defining paths to PBS data
- "MULTI-COMPANY SETUP" – What to do in order to access a company other than 00
- "VISION OPTION SETUP" – Add this line to the setup:

```
max_files 256
```

These steps are covered in detail below.

"PBS XDBC PATH" - Defining the path to the PBS ODBC Catalog

This is where the PBS ODBC Catalog is installed. The location can vary depending on where your PBS system is installed. This is the default location:

```
dictsource "C:\PSI\PBS\XDBC\SYSCAT"
```

Therefore, if your PBS system is located under C:\Program Files\PSI\PBS, you do not have to make any changes to the path entries.

If PBS is located under C:/PBS then the path to the PBS ODBC Catalog must be changed to:

```
dictsource "C:\PBS\XDBC\SYSCAT"
```

If PBS is located on a server and it is mapped to the P drive, the path to the PBS ODBC Catalog should be something like:

```
dictsource "P:\PBS\XDBC\SYSCAT"
```

Altering Paths to Find PBS Files

A path to each module's data files is required. In this section there is one line that has a series of paths that indicates the location of the PBS module data files. Each path is by module by company.

If you are only using Company 00 and PBS is installed in Program Files/PSI/PBS then you do not have to make any changes in this section. Use the forward slash for these paths.

A semi-colon comes before each path. The first path of (C:/PBS/XDBC/DATA;) is the location of specific AcuXDBC files. The remaining paths are for the PBS data files. As needed, change the path to the XDBC/DATA and the PBS data files. The configuration file line starts with the following:

```
file_prefix ";C:/PBS/XDBC/DATA/;C:/PBS/AP00"
```

If PBS is located under a networked mapped drive of "P:/Passport" then the path to the Accounts Payable Company 00 files is ";P:/Passport/AP00"

When using a text editor, it may be easiest to select the line and use a search and replace tool. For example, you may search for "C:/PBS" and replace it with "P:/Passport".

Multi-Company Setup

When accessing a second or more companies, make a copy of the **PBSxdbc00.cfg** text file and rename it to the company you are accessing. If you are gaining access to Company PS, rename it to **PBSxdbcPS.cfg**.

You must alter the paths to the PBS data files. See the section above "Altering Paths to PBS Data Files".

You must also change the company number. Look for the following line:

```
filename_wildcard $$=00
```

The company number is represented by the last two characters. If you are accessing company "PS" in PBS, the line must be changed to:

```
filename_wildcard $$=PS
```

Advanced Options Setup

Unless you are an advanced user, we recommend that you do not make any changes to Advanced and other options in the configuration file.

If you are writing data from an external application back to PBS, please read this.

Changing "Read-Only" to "Read-Write"

Warning: Please be aware that setting the XDBC option to Read-Write will allow the user to change data within the Passport Business Solutions files from some external applications. PBS

data integrity can become corrupted if an incorrect value is entered in many PBS fields. We highly recommend that you fully understand the implications of writing data to PBS files before you allow the use of this setting. For example, when writing data to one file, this may require a change in another file.

The default is “read_only yes”. If you want to write back to PBS files change the setting to “read_only false”.

Data Source Name Configuration Example

Access of the configuration file is determined in the DSN. **After the install, the configuration file name must be changed from the default file name as provided.**

Accessing the ODBC Data Source Administrator

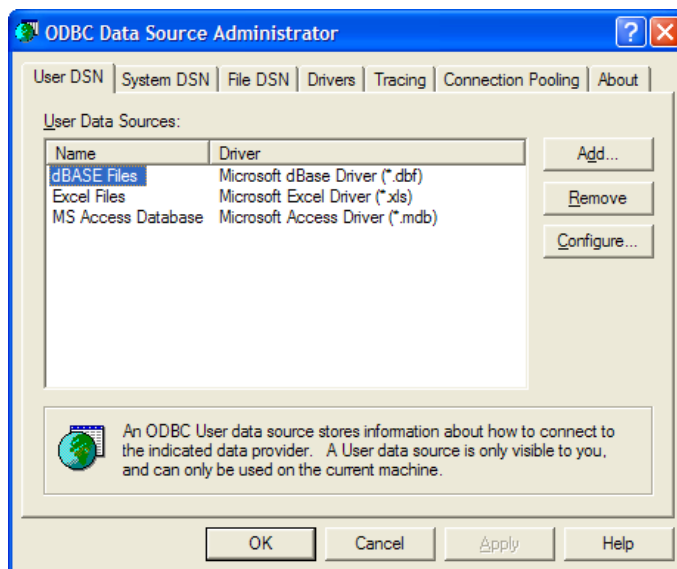
The following example sets up AcuXDBC access to Passport Business Solutions data installed in C:\Program Files\PSI\PBS.

To setup your AcuXDBC DSN:

In Windows 7 or Windows 8

Select:

Start > All Programs > Acucorp 9.1.x > AcuXDBC > ODBC Data Source Administrator.



This opens your *ODBC Data Source Administrator* window. You use this application to configure your Passport Business Solutions AcuXDBC access. You may elect to create a User DSN or System DSN as it relates to the first two tabs in the above screen.

User DSN

Configuring a DSN under this tab creates a data source that is local to the computer and can only be used by the current user.

System DSN

Configuring a DSN under this tab creates a data source that is local to the computer. It is not user specific and any user having the correct privileges may access the data source.

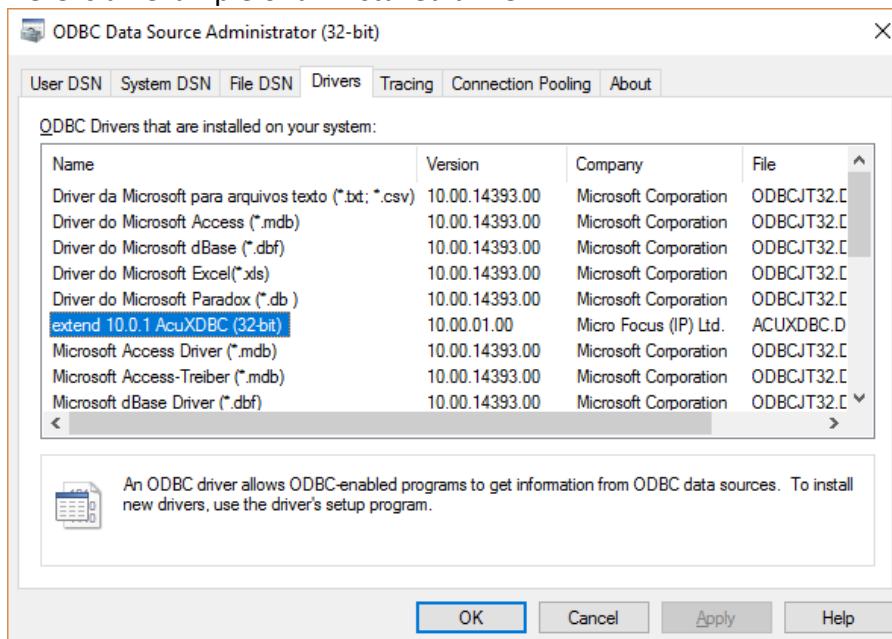
File DSN

The User and System DSNs produced via the AcuXDBC drivers do not display in the File DSN list.

Drivers

This will help you determine which drivers are installed on your workstation. Following the installation of AcuXDBC you will see the *Acucorp AcuXDBC driver* as one of the available drivers. If you do not see the driver listed here, it has not been installed properly or at all.

Here is an example of an installed driver:



Add and Configure the Data Source Name (DSN)

Once you have determined if this is a User or System DSN, select the appropriate tab and add this data source to the list.

Left Click on **Add**

You will be prompted to select a driver that you want to use for a data source. Select the *extend AcuXDBC* driver. This is the driver that will be used to access Passport Business solutions data.

Left Click on **extend AcuXDBC**

Click on **Finish**

The following *AcuXDBC Setup* window displays:

The screenshot shows the 'AcuXDBC Setup' dialog box with the following fields and options:

- Data Source Name:** An empty text input field.
- Description:** An empty text input field.
- Network driver:** An unchecked checkbox.
- Hostname:** An empty text input field.
- Port:** A text input field containing the value '20222'.
- Configuration File:** A text input field containing 'acuxdbc.cfg' and a 'Browse...' button.
- Database security:** A section containing three text input fields for 'Username', 'Password', and 'Confirm Password'.

At the bottom of the dialog are 'OK', 'Cancel', and 'Apply' buttons.

Data Source Name

In the Data Source Name field type in the name you want to give to this data source. This name may be anything you want, but should be representative of the data you intend to access. If you are using only one company in PBS, you could type 'PBS' in this field. If you have multiple PBS companies and you need a DSN for each company, enter 'PBS00' for company ID 00.

Note: You will need a separate configuration file for each PBS company.

Description

The description is your choice and only displays in this window.

Configuration File

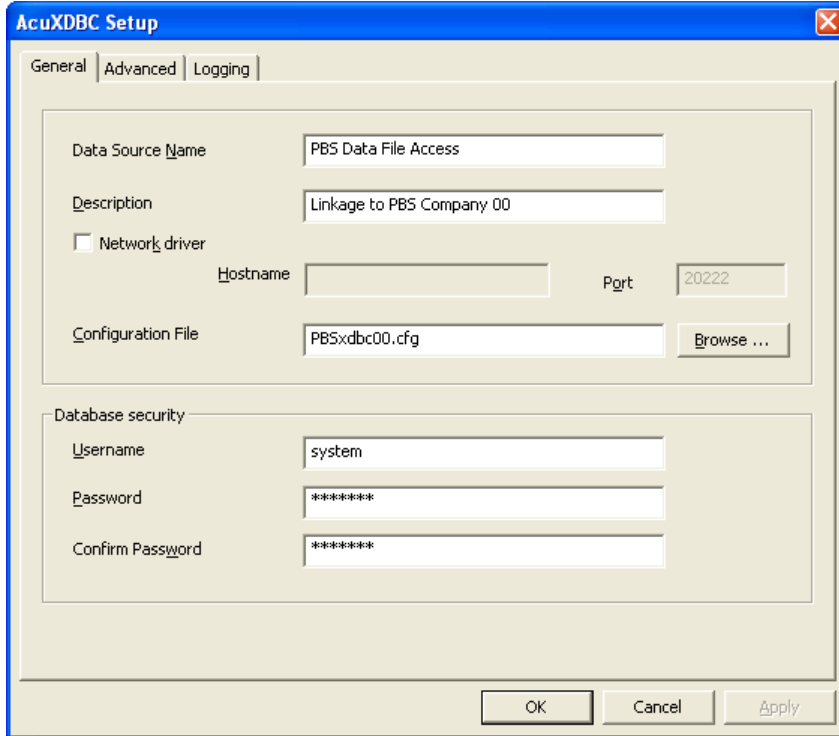
Enter the *pbsxdbc00.cfg* configuration file name.

Note: The paths in the configuration file will have to be modified to find the PBS XDBC system catalog location and PBS Data file locations. It will also have to be copied and renamed for each PBS company you are accessing other than 00. See [AcuXDBC Configuration File](#) for more information.

Database security

In the *Database security* section of the window, enter *system* for user name and *manager* for the default password. Enter *manager* again in the *Confirm Password* field.

See your Administrator for login information.



The screenshot shows the 'AcuXDBC Setup' dialog box with the 'Database security' section expanded. The 'Username' field contains 'system', the 'Password' field contains '*****', and the 'Confirm Password' field contains '*****'. The 'Data Source Name' is 'PBS Data File Access' and the 'Description' is 'Linkage to PBS Company 00'. The 'Port' is set to '20222' and the 'Configuration File' is 'PBSxdbc00.cfg'. There are 'OK', 'Cancel', and 'Apply' buttons at the bottom.

Advanced Tab

Select the *Advanced* tab and increase the **Maximum Columns** field to 512; as seen here:

Maximum Columns

The other fields on the advanced tab should not be changed.

Logging Tab

Do not change anything on this tab.

This setting will eliminate an error displayed by the DSN when accessing a PBS file that have more than 256 fields.

This completes the setup of your AcuXDBC DNS. You will now be able to gain access to your Passport Business Solutions data using ODBC-enabled applications.

ODBC-Enabled Application Installation and Configuration

ODBC-enabled applications use various setup routines and configuration parameters. Setting up your ODBC-enabled applications is beyond the scope of this document. Refer to the user manual or on-line help for information about how your specific ODBC-enabled application makes use of the Windows ODBC standard to access external data.

Tip: In order to use Excel with ODBC, you must also install Microsoft Query. For some versions of Office, Query is not installed automatically. You must select the custom installation to install it.

Test the AcuXDBC Client Installation

Once you have installed and configured both the server and the client you are now ready to access your PBS data from your Windows client.

To test this, use your ODBC compliant program of choice, such as Access™, Excel®, Crystal Reports®, etc. If you use Excel to access PBS via AcuXDBC, you must have Microsoft® Query installed.

Testing XDBC from the Client

You may run a test AcuXDBC without any third party application installed. This will work for both single user install; not the server version.

Here is an example of verifying that XDBC is installed properly. You may modify the start menu selection to run it. Look for EXTEND on the start menu. It will also indicate a version number.

Then look for the XDBCQuery menu selection and change it to something similar to this:
"C:\Micro Focus\extend 10.0.1\AcuGT\bin\xdbcquery.exe"
/cacuxdbc04:system/manager/xvision:PBSxdbc00.cfg

The actual path must match what you are using. If there is a connection, PBS data will display on the screen.

You may also run it from the folder where the xdbcquery.exe program is located. From a command prompt enter something like this:

```
xdbcquery
```

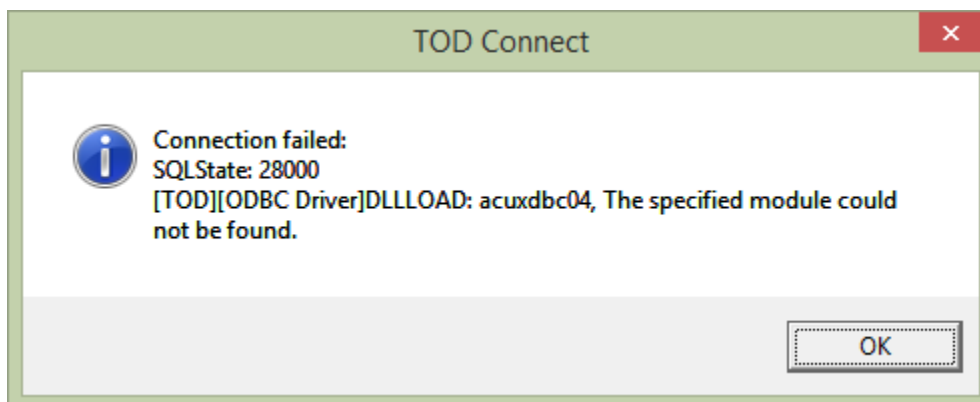
Then type this SQL statement:

```
SELECT * FROM PUBLIC.VENFIL VENFIL;
```

In the example above we are querying the VENFIL. Substitute the file that you want to query.

Connection Failed Error Message – SQL State 28000

If you get a message like this when running Excel, here are two possible solutions:



Do the following:

1. If you did not install PBS as an administrator, uninstall XDBC from the current user, right click on the install program and select *Run as administrator*. After installing AcuXDBC, configure it again.
2. Check the paths to PBS. It is possible that the path may become wrong if you had an older version, un-installed it and re-installed the newer version, or re-installed the current version to a different path.

Select System > *Advance system settings*, Select the *Advanced* tab and click on the *Environment Variables* button.

1. Check the *Value* (path) of the *Genesis Home* variable. Does it point to the AcuXDBC install? If no, change it.
2. Check the *Path* variable. Search through the *Path* variable to make sure it points to the bin folder. Here are some examples of the path:

C:\Micro Focus\Acucbl92x\AcuGT\bin

C:\Micro Focus\Acucbl10.0.x\AcuGT\bin

C:\Program Files\Micro Focus\Acucbl92x\AcuGT\bin

C:\Program Files\Micro Focus\Acucbl10x\AcuGT\bin

C:\ Program Files (x86)\Micro Focus\Acucbl92x\AcuGT\bin

C:\ Program Files (x86)\Micro Focus\Acucbl10.0.x\AcuGT\bin

3. This happened on a Windows 7 system. It may occur on Windows 8 or 10. AcuXDBC is accessing the wrong zlib.dll program. When the MSQRY32.EXE process accesses the AcuXDBC driver it should be loading:

C:\Program Files (x86)\Micro Focus\extend 10.0.1\AcuGT\bin\zlib.dll

Note that this path may be different for you. The primary issue is it needs to access the .dll file under the XDBC install.

The program looks for .dll files in the Windows folder first, so it is finding this one instead:

C:\Windows\SysWOW64\zlib.dll

The solution is to delete the zlib.dll in the Windows/sysWOW64 folder.

4. The path environmental variables may be too long which can cause the path to the XDBC install to get truncated so that the driver cannot find the acuxdbc04.dll. Move the path to XDBC from near the end of the paths to be beginning.
5. Sometime it is necessary to shut down and reboot will fix finding the genesis home objects.

Possible Problem with XDBC Software

If changing the path is not the issue it could be a problem with Excel or whatever XDBC compliant software you are using.

The next steps are to check if the AcuXDBC installation itself to verify that it works on its own using the AcuXDBC query tool. These commands determine if the XDBC installation is working properly.

From an **administrator** command prompt on the workstation execute:

```
odbcsql -d YourDsnName
```

If there are no errors then at the SQL prompt execute a query. Do not forget the ; at the end of this command:

```
select t_name from genesis_tables;
```

If there are no errors then try a query against one of the tables. Do not forget the ; at the end of this command:

```
select * from YourTableName;
```

Type q to exit that query, then /q to exit the query tool.

When the above commands work then there is an issue with the Excel or other software you are using to access the data via AcuXDBC.

The solutions is to re-install Excel or other software and that should resolve the issue.

Where to go from here?

These instructions only cover the configuration for getting AcuXDBC up and running.

For more information on using AcuXDBC with your external applications, like Access and Excel, refer to the documentation provided with the application, study one of the many documents available online for the application or pursue training services from a local provider.

Appendix

1. Concepts and Terms

The following terms are found in this guide and are described as they are used in this guide. For general accounting definitions consult the glossary in your Passport Business Solutions System Manager User documentation. Other definitions can be found in Chapter 1 of each Passport Business Solutions user document.

AcuXDBC

AcuXDBC is a data management system designed to incorporate Acucorp Vision files into a relational database-like environment. AcuXDBC enables you to apply SQL and relational database concepts to your COBOL data files, resulting in data that can be accessed and managed in much the same way as many of today's popular relational database management systems.

Column

This term is used when referring to relational databases. A column can be considered the same as a field as defined below.

Data File

A Passport Business Solutions data file usually contains one or more related records. For example, a group of employee records would comprise an employee file.

Data Source Name (DSN)

A data source name is the name you assign to a group of AcuCOBOL files being accessed via XDBC.

Database

A database, loosely speaking, refers to all available data, whether contained in one file or many files.

In Passport Business Solutions, the database consists of multiple files related to a specific module. As the standard, these files are stored in a folder by module. For example, Accounts Receivable files are stored in a folder named AR00. Accounts Payable files are stored in a folder named AP00, where 00 represents company number.

In relational database terminology such as SQL, a database consists of one or more files that contain one or more tables.

Field

A data field consists of one or more characters that represent a single piece of information. For example *first name*, *last name*, and *amount* are three data fields. The content, or value, of the

field *first name* might be "John" or "Debbie" or any other *first name* consistent with the rules governing the content of the *first name* field. The content, or value, of the field *amount* might be "129" or "5.98" or any other "amount" consistent with the rules governing the contents of the field *amount*.

Fields may carry any name, but the content type specifies the rules governing the content of a field. Passport Business Solutions fields available to an ODBC-enabled application are classified as type **alphanumeric**, **integer**, **decimal**, or **date** fields.

Alphanumeric fields may contain letters of the alphabet, numbers, and special symbols (\$, *, :, #), or any combination of these three kinds of characters. Some alphanumeric fields can only have uppercase characters and some can have both upper and lower case.

Integer fields may contain only whole numbers. They may not contain letters, special symbols, or fractional numbers.

Decimal fields may contain whole numbers and fractional numbers expressed in decimal notation.

Date fields contain only dates.

Open DataBase Connectivity (ODBC)

This is a data access standard developed by Microsoft. This standard allows data to be exchanged between database systems that use incompatible data access methods. This is the standard used by Acucorp to make Passport Business Solutions data available to ODBC-enabled applications such as Excel®, Access® or Crystal Reports®.

Read_Only

This indicates that you may only create reports, lookups and view PBS data. The AcuXDBC configuration defines this option.

Read_Write

This indicates that you can alter PBS data through ODBC from an external application such as Microsoft Access. The AcuXDBC configuration file defines this option. Take care in using the Read_Write option. There is a potential of making the data in PBS unusable when writing wrong types of data to certain fields.

Record

Records are comprised of one or more related fields. For example, an employee record might contain a *first name*, *last name*, *social security number* and *marital status* fields.

Row

This term is used when referring to relational databases. A row can be considered the same as a record as defined above.

PBS ODBC Catalog

This is where the definitions to the PBS data files are stored. When you access PBS files via the ODBC standard, it looks at the PBS ODBC Catalog to determine which PBS files and fields that can be accessed.

System Catalog

This is Acucorp's general term noted in their documentation for what this documentation calls the **PBS ODBC Catalog**.

Table

This term is used when referring to relational databases. A table can be considered the same as a *Data file* as defined above.

XFD

This is an abbreviation for **external file definition** and it is an extension for a file type used with AcuODBC; a product previously supported by Passport for ODBC access, which has many similarities with XDBC. The XFD file is the major component of AcuODBC. However for XDBC an xfd file is only an intermediate step for creating a PBS ODBC Catalog. The PBS ODBC Catalog is the major PBS component with AcuXDBC. In most cases you will not have to be concerned with XFD files when using AcuXDBC. If you need to modify an XFD and create a custom PBS ODBC Catalog, please contact PSI development for instructions.

Each XFD file contains a definition for one PBS file. An example is venfil00. The 'ap' represents Accounts Payable. The 'venfil' represents Vendor file. The '00' means it is for company '00'.

2. Data Security and Limiting Access to PBS Data

The installation of AcuXDBC provides access to all the PBS data files; including Payroll and General Ledger information.

Security may be set up to prevent other users from accessing certain PBS data files when they are located on a server.

You may also limit the modules that users can access when setting up the configuration file. If a user has access to the configuration file, they could modify it and access confidential data. For this reason the Server version of XDBC is better because you can prevent a user from accessing and altering a configuration file.

3. Support and Contact Information

If help is needed to resolve any issues, please contact your PBS supplier or Passport's support department at: (800) 969-7900 ext. 124 or email support@pass-port.com.

In addition, if you discover anything that will help improve this document or the installation, please let us know.

Passport Software, Inc.

3801 West Lake Avenue

Suite 301

Glenview, IL 60026

800-969-7900

psi@pass-port.com

<http://www.pass-port.com/>

4. ODBC Performance

ODBC performance can vary per system and data files being accessed. There are several ways you may address performance and speed:

1. Optimize your queries in Access by using *Import* instead of *Link Tables*, or use make-table queries to create static copies of large data tables. This will allow you to work with a localized data set while you are running queries, but the disadvantage here is that you will have to re-import your data every time you wish to work with it. You may also optimize the link to Access by first creating Queries for just the data fields you need, and then combining queries in a report.
2. In Access create queries of only the data you need and then report on the data contained in the query. This will limit the amount of data you are accessing when generating your report.
3. Improve your network performance by upgrading your network hardware, such as switched hubs, gigabit Ethernet, and faster workstation computers. This option provides a limited increase in bandwidth, which should help performance and speed.
4. Install the AcuXDBC Server software on your Passport Business Solutions server. With AcuXDBC server, all queries and transactions take place on the server processor instead of the local machine, which improves performance significantly. This option will provide the most performance gain, allowing your server to handle all ODBC requests on the server side while still accessing your data from your workstation computer.

5. SQL Support

SQL commands may be used to query and manage PBS data. Refer to the AcuXDBC™ User's Guide in the Acucorp documentation for the available commands. If you do not have this document, contact Passport Software for assistance.

6. Hardware Issues

When using a server version, with two NICs in the server and two IP addresses, the host software may attach to the secondary IP causing the workstation to not connect to the XDBC service. Diagnosis involves comparing the server log trace, to identify the used IP address, with the workstation trace log giving the IP address being used by the DSN. If they will be different then the connection error exists.

7. For programmers: Adding Files to an XDBC System Catalog

Here are the steps to add or change file in an existing XDBC system catalog.

In the top-level PBS folder create a batch file called PBS_usyscat.BAT with the following contents:

```
rem *****
rem * (C) Copyright Passport Software, Inc. *
rem * ALL RIGHTS RESERVED. No part of this material may be reproduced or *
rem * transmitted in any form or by any means, electronic, mechanical or *
rem * otherwise, without written permission from RealWorld Corporation and *
rem * Passport Software, Inc. *
rem *****
rem
rem =====
rem = PBS_usyscat.bat
rem =
rem = After setting up the directories in the GENERAL SETUP INFORMATION
rem = below, you can enter the xfd file name to update here or using the
rem = -u switch on the command line.
rem =
rem =====
rem
rem =====
rem =
rem = GENERAL SETUP INFORMATION
rem =
rem =====
rem
rem =====
rem =
rem = Set the root location of your PBS installation here.
rem = For example:
rem = set PBS_DIR=C:\Program Files\PBS\
rem =
rem =====
```

```

SET PBS_DIR=C:\Program Files\PBS\
SET UTL_PBS_DIR=C:/Program Files/PBS/

rem =====
rem =
rem = Set your own directory for the AcuXDBC scripts and
rem = executables.
rem = For example:
rem =     set XDBC_BIN=c:\user1\bin\
rem =
rem =====

SET XDBC_BIN=%GENESIS_HOME%\bin\

rem =====
rem =
rem = An XDBC directory where your system catalog, new data files
rem = (generated by adding a table using the xdbcquery tool) and log file(s)
rem = will be created in your PBS installation directory. You can modify
rem = the defaults below.
rem =     set PBS_XBDC_DATA=c:\data
rem =
rem =====

SET PBS_XBDC_DIR=%PBS_DIR%XDBC\
SET PBS_SYS_CAT=%PBS_XBDC_DIR%SYSCAT\
SET PBS_XBDC_DATA=%PBS_XBDC_DIR%DATA\
SET PBS_SYS_CAT_LOG_DIR=%PBS_XBDC_DIR%LOGFILES\
SET PBS_SYS_CAT_LOG_FILE=%PBS_SYS_CAT_LOG_DIR%LOAD-XFD-LOG.TXT

rem =====
rem =
rem = A command line utilities are called below. Since it is called
rem = directly and in case the paths to the system catalog and other files
rem = contain spaces, "\\" or "/" must be used to separate the folder
rem = structure.
rem = Set the location of your xfd files to update in your system
rem = catalog here. For example:
rem =     set UTL_SYS_CAT_DIR="C:/Program Files/PBS/XDBC/SYSCAT"
rem =
rem = to properly run:
rem =     xdbcutil -z -c -d %UTL_SYS_CAT_DIR% -pa
rem =
rem =====

SET UTL_SYS_CAT_DIR="%UTL_PBS_DIR%XDBC/SYSCAT"
SET UTL_XFD_DIR="ODBC/ODBC00"
SET UTL_XFD_TO_UNAME=apacct00#apacct#apacct$.dat

set ASQLUSER=system
SET SVXDBC_BIN="%XDBC_BIN%"
SET SVDATA=%PBS_XBDC_DATA%
SET SVCAT=%PBS_SYS_CAT%
set SVUSER=%ASQLUSER%

:loop
if "%1" == "" goto startup
if "%1" == "-h" goto show_usage
if "%1" == "-H" goto show_usage
if "%1" == "/"?" goto show_usage
if "%1" == "-u" goto set_xfd_to_uname
if "%1" == "-U" goto set_xfd_to_uname

```



```

goto loop

:show_usage
echo.
echo !!! After setting up the directories in the GENERAL SETUP INFORMATION
echo !!! below, you can enter the xfd file name to update here or using the
echo !!! -u switch on the command line.
echo !!!
echo Usage: PBS_usyscat -u apacct00
echo !!!
echo !!! Use # to seperate the name of the xfd, table name and vision file name.
echo !!!
echo Usage: PBS_usyscat -u apacct00#apacct#apacct$$.dat
echo.
goto end

:set_xfd_to_uname
shift
SET UTL_XFD_TO_UNAME=%1
shift
goto loop

:startup
echo.
echo Building system catalog with the following settings:
echo.
echo.
echo !!! CAUTION: This procedure updates the current system catalog.
echo !!!
echo !!! Confirm the following locations are correct before pressing Enter.
echo !!! Press Ctrl+C to cancel this operation.
echo !!!
echo.

echo Installation directories/files:
echo Current Acucorp executables = %XDBC_BIN%
echo Current PBS = %PBS_DIR%
echo System Catalog = %PBS_SYS_CAT%
echo Log Directory = %PBS_SYS_CAT_LOG_DIR%
echo Log FILE = %PBS_SYS_CAT_LOG_FILE%
echo File to update = %UTL_XFD_TO_UNAME%
echo.

rem =====
rem =
rem = Update table descriptions into
rem = the SYSTEM_CATALOG
rem =
rem =====

echo Update file descriptions
ECHO "%XDBC_BIN%"xdbcutil -z -v -l "%PBS_SYS_CAT_LOG_FILE%" -d %UTL_SYS_CAT_DIR% -x
%UTL_XFD_DIR% %ASQLUSER% -u %UTL_XFD_TO_UNAME%
PAUSE
"%XDBC_BIN%"xdbcutil -z -v -l "%PBS_SYS_CAT_LOG_FILE%" -d %UTL_SYS_CAT_DIR% -x
%UTL_XFD_DIR% %ASQLUSER% -u %UTL_XFD_TO_UNAME%
@echo off
goto end

```

```
:end  
  
set XDBC_BIN=%SVXDBC_BIN%  
set PBS_XBDC_DATA=%SVDATA%  
set PBS_SYS_CAT=%SVCAT%  
  
@echo on
```

- You do not need to back up PBS before this procedure, saving a copy of the XDBC folder in case something goes wrong should be sufficient enough.
- Right click on the file and select “EDIT” to open the batch file in Notepad or use a similar editing software.
- Find the first “active” line in the file. It reads “SET PBS_DIR” and the line after that reads “SET UTL_PBS_DIR”
Replace the name of the location of your PBS software with slashes as shown, different on each of the lines.
- Find a line that says “SET UTL_XFD_TO_UNAME=apacct00#apacct#apacct\$.dat”.
Type the name of the new or updated xfd exactly the way shown on the line above replacing only the prefix of the module and name of the file. You must type the name three times in exact manner as shown on the line above.
- Save the file and press Enter when it is selected, to start running the batch, then press Enter when prompted.
The command prompt will terminate once the batch is done running which should only take a second.
- Open the XDBC folder in the top level PBS and open the log file in LOGFILES directory. It should display information similar to what is listed here:
Started at 2016-11-01 14:40:57
Information: Begin XFD Conversion
Information: Begin XFD file apacct00
Information: Begin Table APACCT
Information: End Repository Conversion
- You may start XDBC and the added/updated file should be available for viewing.

8. Modifying the XDBC Queries in Excel


Passport has made an important decision to standardize on one set of fields for both SQL and XDBC. This will result in some work in making the transition to PBS 12.05 and later from older versions when running XDBC related reports. It will require some work to point the queries to the new table and field names in the new version of the driver.

This decision was made to standardize on one set of field and table names for both XDBC and SQL to help those who wish to transition from Vision to SQL in the future. This will retain any custom reports/spreadsheets they may have designed against the 12.05 database or later. Simply remove or rename the old DSN and set up a new one pointing to the SQL database instead and be sure it has the exact same name as the old DSN and your reports should continue working.

For users coming from 12.04 or back, this will involve editing any queries to reflect the new table and field names. Since Excel is the most commonly used tool with XDBC, we will cover how you can edit your existing queries with reasonable ease to get them working with the new 12.05 XDBC driver.

First, let's take a look at what the user may see when they try to run their old query against the new, 12.05 XDBC catalogue:

56794	8/17/2017	DEFALCO SPAS	SHOWROOM	PR-DENA-G	PREN
56794	8/17/2017	DEFALCO SPAS	SHOWROOM	CLR-SILVER-90	90X9
56794	8/17/2017	DEFALCO SPAS	SHOWROOM	HCO-82"SQ-CHG	82"X
56796	8/17/2017	SUNRISE POOLS & SPAS INC	BOYLE	LY-BALI-E	LUXL
56796	8/17/2017	SUNRISE POOLS & SPAS INC	BOYLE	CLR-TUSCAN-100	100X
56796	8/17/2017	SUNRISE POOLS & SPAS INC	BOYLE	LIT-114	HALC
				ACC-94"SQ-WAL	94"X
				SKT-PWBSTEP40-3	3 TIE
				ACC-86"SQ-WAL	86"X
				PMP-350XP-AMP	3.5HI
				AIC-021GY	SILEP
				PVC-3VAL-TOPDGY	DK G
				PLW-2-PVC-GP-NL	GRAI
163088	8/17/2017	TRADING POST	UPS	FLT-201TL	25SQ
163088	8/17/2017	TRADING POST	UPS	UNN-200	2" FL
163088	8/17/2017	TRADING POST	UPS	PVC-207	2"SP
163088	8/17/2017	TRADING POST	UPS	PVC-202	2" SL
163088	8/17/2017	TRADING POST	UPS	PVC-211	2" SP
163088	8/17/2017	TRADING POST	UPS	VAL-035	2"S X
163088	8/17/2017	TRADING POST	UPS	VAL-030	2" SL
163088	8/17/2017	TRADING POST	UPS	VAL-NUT-2	2"SP



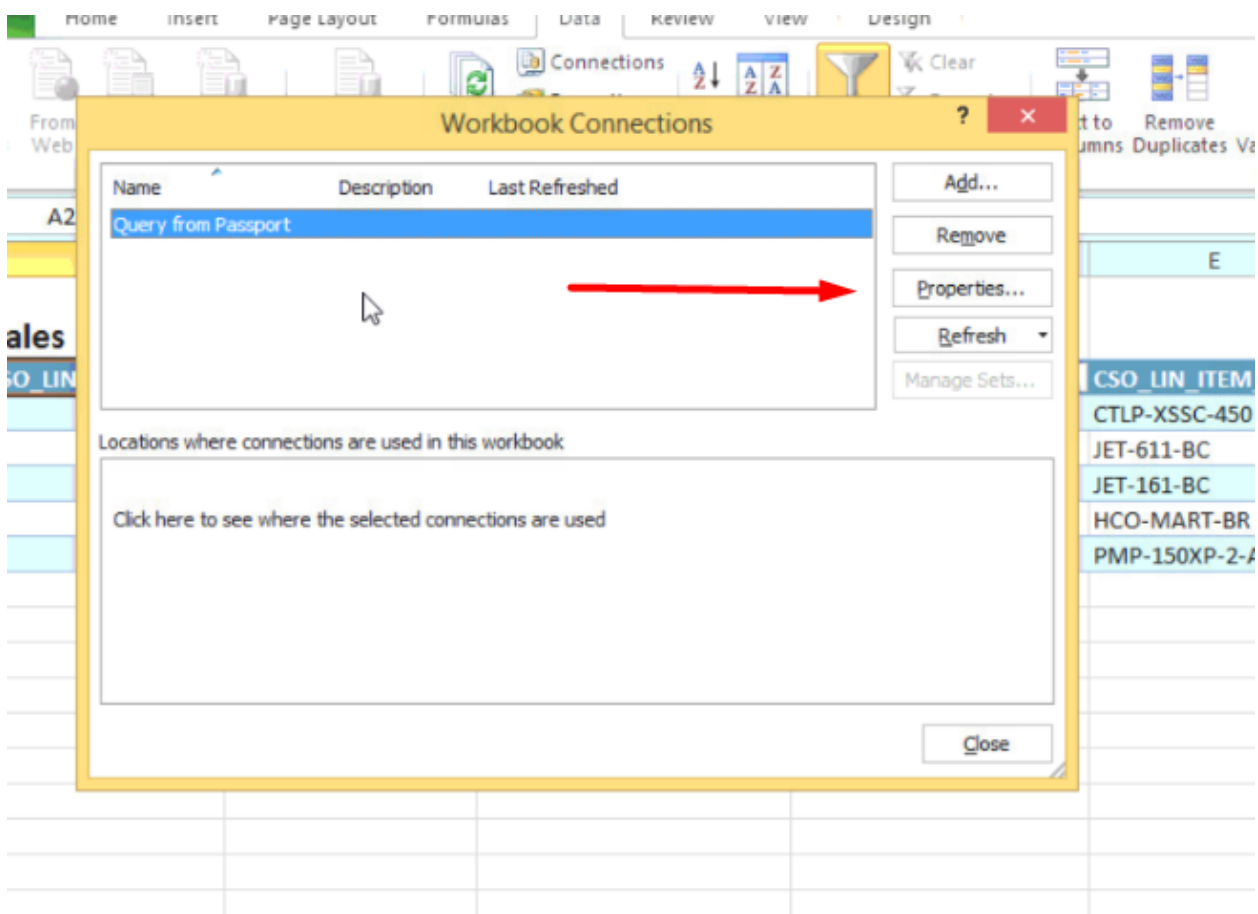
This user's query is running against PBS Manufacturing's order tables. In the error above, the first problem Microsoft Query encountered was it could no longer find the CO_CSOHDR table. This is the sales order header table in CO. If the process were continued, it would give many additional errors on both another table, and field names within the queries.

To resolve this, click OK (assuming you've run the query) or if not, while in the spreadsheet, click on the Data tab and then click on the Connections button on the Excel menu:

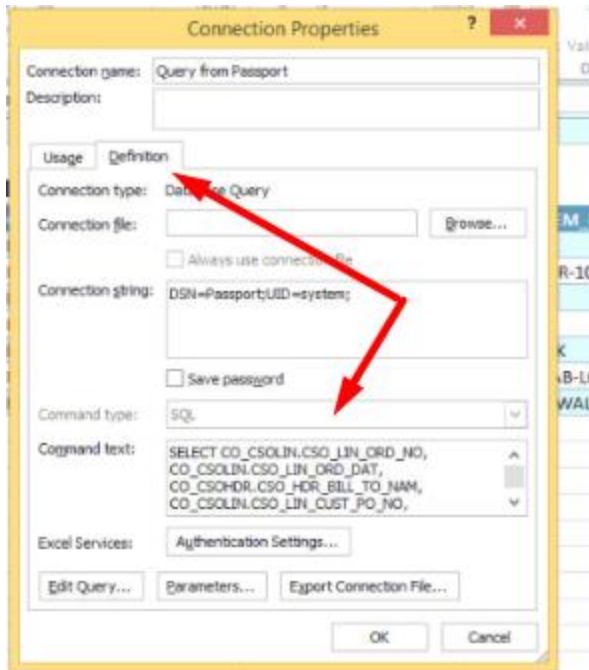
Mid West Sales.xlsx - Microsoft Excel

CSO_LIN_ORD_NO	CSO_LIN_ORD_DAT	CSO_HDR_BILL_TO_NAM	CSO_LIN_CUST_PO_NO	CSO_LIN_ITEM_NO	CSO_LIN_DESC	CSO_LIN_DESC_2
163065	8/14/2017	MOUNTAIN TOP REALTY	UPS	CTLP-XSSC-450	IN.K450 ELECTRONIC SPA SIDE	CONTROL W/PDC LOGO
163065	8/14/2017	MOUNTAIN TOP REALTY	UPS	JET-611-BC	BODY,NUT,GASKET & COMP RING	3/8" B X 3/4" B EURO TYPHOON
163065	8/14/2017	MOUNTAIN TOP REALTY	UPS	JET-161-BC	BODY,NUT,GASKET & COMP RING	3/8" B X 3/4" B TYPHOON SERIES
163065	8/14/2017	MOUNTAIN TOP REALTY	UPS	HCO-MART-BR	MARTINIQUE/VANCOUVER HARDCOVER	WALNUT
163089	8/18/2017	MOUNTAIN TOP REALTY	UPS	PMP-150XP-2-AMP	1.5HP DUAL SPEED PUMP W/AMP	PLUG AND 2" SUCTION/RETURN

This will open up a new screen that shows you the query being used in this spreadsheet (if there are multiple, you may see more than one listed and you will repeat the following for each):

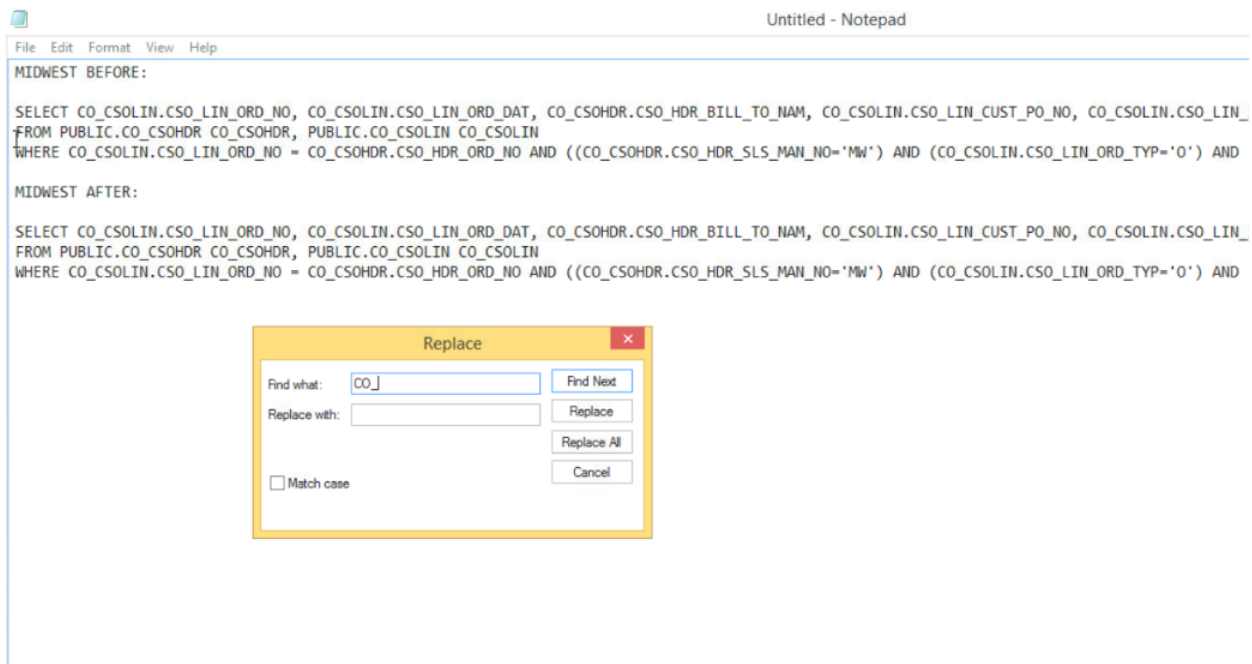


Click on the properties button and you will be presented with yet another Window where you will be able to see the query properties and even edit the actual SQL code within the query:



Click on the Definition tab (above) and you will see the actual query code below. You can edit the code here or you can highlight and copy the text and paste it into an editor like Notepad where it's much easier to both see and edit.

Once it's there, you can take advantage of feature of Notepad such as the Replace function (found under the Edit Menu):



In the above, you will see I have passed in the code twice so you can see how this query is built and how it ends up. You can also see where I opted to use the Replace function to speed up some of the editing. In the image above, you will notice that there is a CO_ being replaced by nothing. In other words, we're going to search from where our cursor is sitting to the end of the document and we will replace any occurrence of CO_. In my case, I decided to click Find Next, to find the first occurrence so I could verify the text that was going to be changed is something I actually wish to change. Once I confirm then I click Replace. This will remove the CO_ that is highlighted. Once you click replace, it will search for the next occurrence and allow you to click Replace each time. It will repeat this until it reaches the end of the document.

So what exactly are we changing? First, in the XDBC catalogue in 12.04 and back, we refer to each table with its module, then its name. In this case, CO_CSOHDR as previously explained is the table for the sales order header for the Customer Order Processing or CO module. In SQL, and in 12.05 XDBC forward, we no longer refer to the module and simply refer to the table name itself. Removing the CO_ in this instance removes a key piece of the puzzle and resolves the error we saw at the beginning of this document. If we were to use this change only, we'd start to see new errors.

In the case of the query we're working with here, there are two tables being used, CSOHDR and CSOLIN (sales order line) so we will fix the CO_ issue with both using the first Replace function. Now that the table names issue has been resolved, we need to continue our editing to resolve the field name issues. We can use the Replace feature in Notepad to resolve the next big part of this. Each field is named as follows in 12.04 and back:

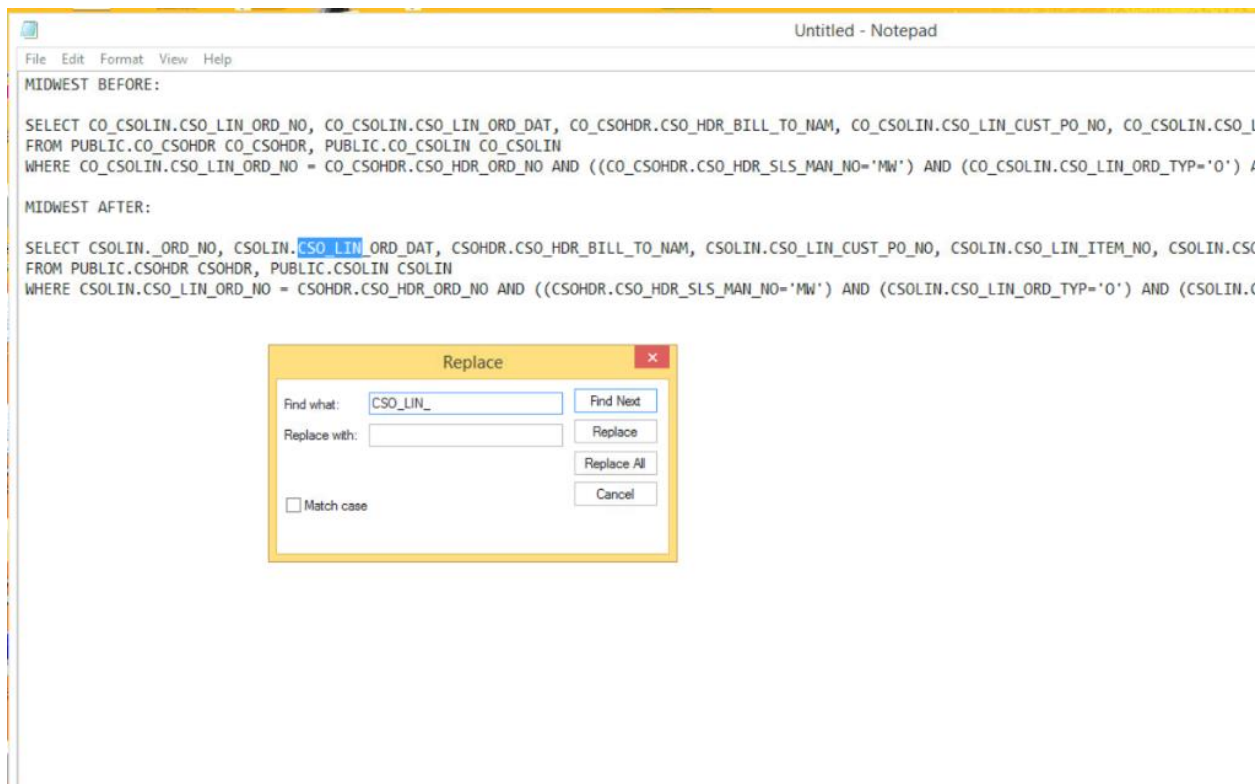
- CSO_LIN_ITEM_NO – This would be the Item Number field in the Sales Order Lines file.
- CSO_HDR_BILL_TO_NAM – This would be the Sales Order Header Bill To Name field or the name of the customer's bill to address on the sales order header.

Typically, this convention will carry through for all fields within a table. So all fields in the sales order line file would start with CSO_LIN_ and the header's fields would start with CSO_HDR_. In 12.05 forward, we've dropped these and simply refer to the field name. So in the above two examples the names would look like this:

- ITEM_NO
- BILL_TO_NAM

IMPORTANT NOTE: In the PBS Accounting and Manufacturing field definition guides the names are provided for each field in the SQL_Column_Name field.

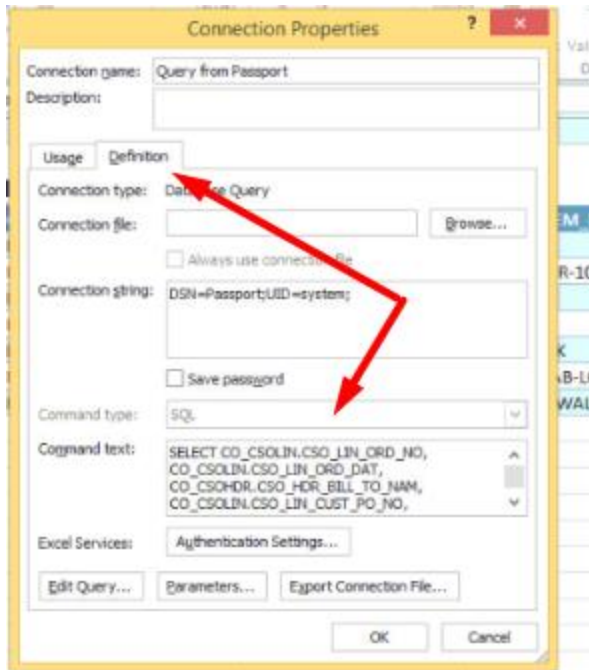
So let's set our cursor at the beginning of the paragraph we've already edited and we'll change the text we're looking to find and replace. In this example, we're going to replace CSO_LIN_ with nothing. In other words, we're going to delete it. I will again recommend stepping through this so you can verify you are changing what you wish to change like we did before:



Move your cursor back to the beginning and repeat this but change the text we're finding and replacing with CSO_HDR_.

This will resolve most, and in some cases ALL issues you are going to encounter in your query. There may be some field names that have changed in addition to dropping the prefix. For instance, to match the SQL field name, CSO_HDR_SLS_MAN_NO didn't just change to SLS_MAN_NO, it actually changed to SLS_REP_NO to match the SQL name. In this case, simply highlight the MAN and replace it with REP. If there are other field names that actually changed that are being used in this query, you'll need to do the same. There is a document available where you can see all field name changes of this nature table by table.

Once you're done with those final edits, you can now highlight the edited query, copy it to memory, and now we can go back to the screen where we got that from and paste it in (I suggest deleting what's there first so you know you're not blending the old and new:



Once you've updated this information, click OK. If you have prompts built into the query, you may be prompted for them now. The query will run in the background once you do so. While it's running, you will see this screen. Once it's done running, you can click the Close button and **SAVE YOUR UPDATED SPREADSHEET!**

You will now be able to use your old query against the new V12.05 tables.

9. Supported Modules and Files

The PBS ODBC Catalog provides access for the Passport Business Solutions files listed below. We have provided access to the most relevant files within Passport Business Solutions. Each Passport Business Solutions file can be identified as a table within an ODBC-enabled application by its filename preceded by an application identifier such as AP for Accounts Payable or GL for General Ledger. For example, the Passport Business Solutions Accounts Receivable Customer File will be listed as a table called "CUSFIL". There are three groups of files: Financial, Distribution and Manufacturing. You may either install a PBS™ ODBC Catalog that contains the *Financial and Distribution files* or a PBS™ ODBC Catalog that contains the *Financial and Manufacturing files*.

The PBS Field definition Guide for PBS and Manufacturing lists all the fields, with descriptions, for all the files below. Refer to those guides as needed.

Financial Files

The following is a list of the PBS Financial Series modules, table identifiers for the module, and the files you can access via the PBS ODBC Catalog. Additional information about most of these

files can be found in the Passport Business Solutions Administration Manual for each module in the appendix titled *Initializing Data Files*.

Accounts Payable (AP)

File name	ODBC Catalog file name
Accounts Payable Accounts	APACCT
A/P Checks	APCHKF
A/P Control Information	APCTLF
Distributions to G/L	APDIST
1099 Federal Auxiliary Information	APFAUX
A/P Forms	APFRMF
Open Items	APOPEN
A/P Transactions	APTRXF
Change Vendor Information	CNGVEN
Pay-to Addresses	PAYTOF
Memo Transactions	TRXMEM
Transaction Distributions	TRXDIS
Vendors	VENFIL
Vendor History	VENHIS
Void Checks	VOIDCK

Account Receivable (AR)

File name	PBS ODBC Catalog file name
Accounts Receivable Accounts	ARACCT
A/R Control Information	ARCTLF
A/R Codes (Terms, Ship-via, etc.)	ARCODS
Distribution to G/L	ARDIST
Change Customer Information	CNGCUS
Open Items	AROPEN
Commission Due	COMFIL
Customer Contacts	CONFIL
Cash Application	CSHAPL
Customer History	CSHTRX
Customer History	CUHFIL
Customers	CUSFIL
Customer's Profile	CUSPRF
Deliver-to (Ship-to) Addresses	DLVFIL
Goods and Services	GDSSVC
Invoice History Auxiliary Information	IHSAUX
Invoice History Headers	IHSHDR
Invoice History Lines	IHSLIN
Invoice History Serial Number Transactions	IHSSER
Cash History	KSHHST
Returned Check Charges	NSFCHG
Returned Check Transactions	NSFTRX
Returned Checks Application	NSFAPL
Returned Check Application to Jobs	NSFJOB
Invoice Auxiliary Information	PIAUXF
Prepaid Cash Transactions	PPCTRX
Invoice Headers	PIHDRF
Invoice Lines	PILINF
Recurring Bill Auxiliary Information	RAUXFI
Recurring Bill Headers	RHDRFI
Recurring Bill Lines	RLINFI
Miscellaneous Charges Distributions	SLDTRX
Miscellaneous Charges	SLSTRX
Sales Reps	SLMFIL
Taxes – Open File	TXOPEN

Check Reconciliation (CR)

File name	ODBC Catalog name
Check Distribution Transactions	CHKDST
Check Transactions	CHKTRX
Checking Accounts	CKACCT
Checkbooks	CKBOOK
Check Reconciliation Control Information	CKCTLF
Distributions to G/L	CRDIST

General Ledger (GL)

File name	ODBC Catalog file name
Budgets	BUDGET
Chart of Accounts	CHARTF
Comparatives	CMPRTV
Changes to the Chart of Accounts	CNGCOA
Statement Specifications	FSSPEC
Codes	GLCODS
G/L Control Information	GLCTLF
Distribution Transactions	GNJTRX
Cost Center Groups	GRPFIL
G/L Comment Layouts	LAYCOL
G/L Layouts	LAYOUT
General Journal Transactions	MLTRXD
General Journal Headers	MLTRXH
Accounting Periods	PRDFIL
General Ledger Transactions	TRXFIL
Standard Journal Transactions	STJTRX

Payroll (PR)

File name	ODBC Catalog file name
P/R Checks	CHKFIL
Change Employees	CNGEMP
Deduction and Earning Codes	DEDCOD
Employee Direct Deposit Accounts	EMPDDA
Employee Extended Information	EMPEXT
Employee Federal Auxiliary Information	EMPFAU
Employees	EMPFIL
Employer Extended Information	EMPREX
Employee State Auxiliary Information	EMPSAU
Payroll History	KHISFL
Manual Distributions	MANDIS
Adjustments History	MANHIS
Adjustments	MANTRX
Multi-City / Multi-State Information	MCSFIL
Jurisdictions	MJRFIL
Payroll Control Information	PRCTLF
Distributions to G/L	PRDIST
P/R Forms	PRFRMF
Quarter to Date History	QTDHIS
City/State History	SCDHIS
Time Worked Distributions	TIMDIS
Time Worked History	TIMHIS
Time Worked	TIMTRX
Void Payroll Checks	VDMTRX
Void Payroll Check Information	VDPCHK

Payroll (PR)

File name

Year to Date History

ODBC Catalog file name

YTDHIS

PBS Company System Files (RW)

File name

Valid G/L Accounts

Batches

Banks

Cash Accounts

Contacts

Credit Card Tokens

Locations

Company Information

Payment Codes

Payment Transactions

Payment History

Return Reasons

Distribution History Navigation

ODBC Catalog file name

ACCTFI

BTCHFL

BNKACT

CSHACT

CONTAC

CCTKNF

LOCATF

COMPFI

PMTCOD

PMTFIL

PMTHIS

RSNFIL

NADIST

This file is common to all companies.

PBS Common* Files (RW)

File name

Multi-company File

ODBC Catalog file name

MLTCMP

Distribution Files

The following is a list of the PBS Distribution Series modules, table identifiers for the module, and the files you can access via the PBS ODBC Catalog. Additional information about most of these files can be found in the Passport Business Solutions Administration documentation for each module in the appendix titled *Initializing Data*.

Inventory Control (IC)

File name	ODBC Catalog file name
Alternate Items	ALTITM
Item Product Categories	CATEGF
Change Item Information	CNGITM
I/C Keywords	CKEYWF
Component Costs	CMPCST
Components	CMPFIL
Warranty Coverages	COVFIL
I/C Codes	ICCODS
I/C Control Information	ICCTLF
Distributions to G/L	ICDIST
Item Notes	ICNOTF
Physical Count Transactions	ICPHXF
Warranty Codes	ICREFM
Serial Number Transactions	ICTKXF
Serial Numbers	ICTRKF
Inventory Accounts	INVACT
Inventory Transaction Jobs	INVTRX
Items	ITMFIL
Item Numeric Sequence	ITMNUF
Inventory History	ITXHIS
Kits	KITFIL
LIFO/FIFO Layers	LAYFIL
Prices	PRCFIL
Serial History	SERHIS
Statuses	STAFIL
Item Status Codes	STATFI
Item Product Sub-categories	SUBCAT
Units of Measure	UNITFI
Warehouses	WHSFIL
Work Order Costs	WKOCST
Work Orders	WKOFIL
Work Order Headers	WKOHDR
Work Order Lines	WKOLIN

Job Cost (JC)

File name	ODBC Catalog file name
Billing and Payment Transactions	BLPTRX
Cost Categories	CATFIL
Change Master	CNGMST

Job Cost (JC)

File name	ODBC Catalog file name
Cost Transactions	CSTTRX
Additional Job Description	DESCFI
Inactive Additional Job Description	DESCFX
Job Details	DTLFIL
Inactive Job Details	DTLFIK
Detail Holdings	HLDFIL
Job Cost Control Information	JCCTLF
Distributions to G/L	JCDIST
Job Masters	MSTFIL
Inactive Job Masters	MSTFIX

Order Entry (OE)

File name	ODBC Catalog file name
Order Lines	LINITM
E.D.I. Audit	EDIAUD
Order Entry Control Information	OECTLF
Order Headers	ORDHDR
Order Transaction Serial Numbers	OETKXF
Recurring Order Headers	OERHDR
Recurring Order Lines	OERLIN

Purchase Order (PO)

File name	ODBC Catalog file name
P/O Auxiliary Information	AUXFIL
Changed P.O Transaction Distributions	CNGDIS
Changed P.O. Headers	CNGHDR
P.O. Transaction Distributions	DISTRX
P.O. Transaction Headers	HDRTRX
Purchase Order Control Information	POCTLF
Distributions to G/L	PODIST
P.O. Master Headers	POHDRF
P.O. Master Lines	POLINF
Receivings History	RCVHIS
Vendor Items	VENITM

Point of Sale (PS)

File name	ODBC Catalog name
Alternate Items (Bar Code Numbers)	ALIITM
Credit Cards	CCRDFI
Contract Pricing	CNTRPC
Customer Restrictions	CRDHLD
Drawers	DRWFIL
Layaway/Line Comments	LWYCMT
Layaway Headers	LWYHDR
Layaway Lines	LWYLIN

Point of Sale (PS)

File name	ODBC Catalog name
Layaway Payments	LWYPAY
Layaway Tracking	LWYTRK
Price Overrides	OVERRID
Transaction/Line Comments	POSCMT
Transaction Headers	POSHDR
Transaction Lines	POSLIN
Transaction Payments	POSPAY
Sales Summary	POSSUM
Services	POSSVC
Pay Outs	POTFIL
Payment Codes	PSCODS
Point of Sale Control Information	PSCTLF
POS Ship-to Addresses	PSSHIP
Serial Transactions	PSTKXF
Posted Payments	PSTPAY
Registers	REGIFI
Comments History	SHSCMT
Header History	SHSHDR
Line History	SHSLIN
Payment History	SHSPAY
Serial History	SHSSER
Special Sale Prices	SPCSAL
Stores	STORFI
POS Users	USERFI

Manufacturing Files

The following is the ODBC Catalog list for the PBS Manufacturing Series files.

Customer Order Processing

File name	ODBC Catalog name
Customer Tracking	BOSTRK
Customer Order Control Information	COCTLF
Backlog, Orders and Sales	COPBOS
Daily Orders Tracking	COPORD
EDI Purchase Order Allowances	CPOALW
EDI Purchase Order Details	CPODTL
EDI Purchase Order Headers	CPOHDR
EDI Purchase Orders Names	CPONAM
EDI Purchase Order Notes	CPONTE
EDI Purchase Order Terms	CPOTRM
Default Comments	CSOCOM
Sales Order Headers	CSOHDR
Sales Order Line Comments	CSOLCM
Sales Order Lines	CSOLIN
Lot/Serial Control Information	CSOLSN
Standard Certifications	CTFFIL
Customer Types	CUSTYP
Price Discounts	PRCDSC
Sales History	SALHIS
EDI Standard Carrier Codes	SCACOD
Ship-to Addresses	SHIPTO
Sales Accounts	SLSACT
Sales Rep Commissions	SLSCOM
Special Prices	SPCPRC

Capacity Planning

File name	ODBC Catalog name
Capacity Planning Control Information	CP_CPCTLF
Detail Plan Details	CP_DPLDET
Detail Plan Periods	CP_DPLNPD
Detail Plan Summary	CP_DPLSUM
Rough Plan Details	CP_RPLDET
Rough Plan Periods	CP_RPLNPD
Rough Plan Summary	CP_RPLSUM
Rough Planned Orders	CP_RPOFIL
Resource Structures	CP_RSFIL

Inventory Management

File name	ODBC Catalog name
Branch Warehouse Items	BWHITM
G/L Control Information	GLICTL
Item Warehouse Accounts	IACWHS
Inventory Cost Categories	ICSCAT
Inventory Management Control Information	IMCTLF
Inventory History	INVHIS
Item Comments	ITMCOM
Item Masters	ITMFIL
Item Types	ITMTYP
Lot/Serial Number History	LSNHIS
Material Usage Variance	MUVHIS
On hand Details	OHIDET
Physical Count Records	PHYCNT
Purchase Order Line Items	POLITM
Period Quantity Sold History	PQSHIS
Product Categories	PRDCAT
Shop Order Comments	SOCOMT
Shop Orders	SOFIL
Shop Order Material Records	SOMATL
Warehouses	WHSCOD

Manufacturing Job Costing

File name	ODBC Catalog name
Costing Barcode Work Information	EMPCBAR
Employee Labor	EMPLAB
Mfg. Employees	EMPSBS
Estimate Details	ESTDET
Estimate Header	ESTHDR
Estimate Lines	ESTLIN
Job Billings	JOBIL
Job Masters	JOBMST
Labor Batch Imports	LABIMP
Labor Import Control Information	LBACTL
Labor Exception Codes	LBXCOD
Manufacturing Jobs Control Information	MJCTLF
Misc. Cost Codes	MSCCCD
Alternate Operations	SOALTO
Shop Order Labor	SOLABC
Shop Order Misc. Costs	SOMSCS
Shop Order Misc. Costs Details	SOPMCD

Master Scheduling & MRP

File name	ODBC Catalog name
Branch Warehouse Factors	MS_BWHMRP
Forecast Periods	MS_FCSTPD
Firm Planned Orders	MS_FPOFIL
Planning Group Items	MS_GRPITM
MRP Headers	MS_MRPHDR
MRP Orders	MS_MRPORD
MRP Pegging	MS_MRPPEG
MRP Requirements	MS_MRPRQT
MRP Run Information	MS_MRPRUN
Master Scheduling Control Information	MS_MSCTLF
Planning Groups	MS_PLNGRP
Schedule Periods	MS_SCHDPD

Product Definition

File name	ODBC Catalog name
Engineering References	ENGREF
Labor Grade Rates	LABGRD
Product Definition Control Information	PDCTLF
Product Structures	PSFIL
Routing Instructions	RTGINS
Routing Operations	RTGOPN
Standard Operations Instructions	STDINS
Standard Operations	STDOPN
Work Centers	WRKCTR

Product Purchasing

File name	ODBC Catalog name
Blanket PO Line Comments	BOLCOM
Blanket PO Header	BPOHDR
Blanket PO Lines	BPOLIN
Item Sources	ITMSRC
Non Vendor Sources	NONSRC
Planner Buyers	PLNBUY
Purchasing Addresses	POADDR
P.O. Change Log	POCNGL
Comments Codes	POCOMT
Product Purchasing Control Information	POCONT
Invoice Distributions	POIDST
Invoice Transactions	POITRX
PO Line Comments	POLCOM
PO Headers	PPHDRF
Purchase Price Variance Details	PPVDET
Purchase Price Summary	PPVSUM

Product Purchasing

File name	ODBC Catalog name
Reject Reason Codes	PRRCOD
Receiving History	RCMHIS
Rejected Material	RJTMTL
Vendor Performance	VENPFM
Shipments In Transit	VENSIT
Vendor Warehouses	VENWHS

Shop Floor Control

Item Operation History	SF_IOPHIS
Operation Schedule	SF_OPNSCD
Schedule Run	SF_SCDRUN
Shop Floor Control Information	SF_SFCTLF
Operation/Material Assignments	SF_SOPMTL
Time Phased Capacities	SF_TIMCAP
Work Center Flow	SF_WCTFLO